



The League Leader

The Official Newsletter of the Long Island Industrial Chess League

Volume XV, Number 12

www.liicl.com

March 11, 2005

Kasparov Retires from Chess

Bombshell Shocks the Chess World

As we were going to press it was the intention to cover the recent USATE tournaments in some detail with emphasis on LIICL participation. However at the last minute we learned of the amazing news. Kasparov was going out on top. The news is of the kind that you will remember where you were when you heard it.

As I write this piece I look around at my chess "trophies". I include in this my posters of Kasparov-Karpov dueling at the Hudson Theatre in NYC in 1990, of the Matches that he had with Deep Blue (How Do You Make A Computer Blink?) and of his match with Anand at the ill-fated World Trade Center. Can it really be 15 years since that World Championship match with Karpov?

Despite whatever you think of

Garry, he was great for chess. He is its rock star. He was brave enough to take on the supercomputers and got back up on the horse after he was defeated. There is no doubt that he still is the best player in the world and by a significant margin. To have that status for two decades is an incredible feat. There is much evidence that he may indeed be the greatest player of all time.

Having covered his matches as a spectator, chess fan and as a reporter for Chess Life and Empire Chess for these 15 years has been an honor and a pleasure. I was able to witness history in the making. I saw him at his best and at his worst but most of all I got to see a maestro at work. It will be a long time before chess will seem normal again.

- The Editor

Garry Wins Linares & Bows Out

The most shocking move at the Linares Super-GM tournament which ended today didn't come at the board but rather immediately after in the post-tournament conference. The World's number one rated chess player for the past 20 years, Garry Kasparov, has announced his retirement.

Garry lost his game today to Veselin Topolov who tied Kasparov for first place. Garry won on tie-breaks. Kasparov knew that he had clinched the tournament in the previous round and seemed to lose interest at the end when he probably could have drawn. In his post tournament comments Garry professed to have had made this decision during the Corus tournament but decided to honor his commitment to Linares.

It appears that he was fed up with the antics of FIDE and of the futile possibility of any unification tournament ever being held. Of course this leaves a vacuum at the pinnacle of the chess world and it is anyone's guess as to how things will play out from here. If this is not a ploy, then chess has lost its primary draw and its best ambassador. The best legends are those who go out on top. Garry we wish you the best and thanks for all of those great games.

Call For Best Games & Combos

With only 2 regular season rounds remaining, many of the races for the Ronnies (LIICL Performance Awards) have been reduced to a few players. However, anyone can win the Best Game or Best Combo. But in order to do so, you must submit that game. Unlike the other Ronnies, these two awards may

come from Individual play or Playoff games as well as regular season matches.

Submit or email your entries to Bob Rizzo. An analysis of the game would help your case. The best games and combos submitted will be sent to a titled player to select the eventual winners. So send them in!

2004-2005 LIICL Regular Season Team Standings

Team	Team LIICL Rating Pts/Rd	Games				Match				
		W	L	D	Pts	W	L	D	Pts	F
NGC	1952 17.56	27	2	7	30.5	9	0	0	9.0	0
PRA	1961 15.67	25	8	3	26.5	8	1	0	8.0	1
EDO	1866 13.44	17	10	9	21.5	6	3	0	6.0	1
LSF	1819 13.00	20	15	5	22.5	5	4	1	5.5	0
Ademco/KSF	1698 10.78	14	18	4	16.0	5	4	0	5.0	3
CCC	1574 10.22	13	20	3	14.5	2	5	2	3.0	2
Alumni E	1569 10.00	12	22	6	15.0	2	6	2	3.0	0
Alumni D	1659 9.00	12	26	2	13.0	2	7	1	2.5	2
Alumni C	1448 7.33	6	27	3	7.5	0	9	0	0.0	0

In This Issue

Bombshell Shocks the Chess World ...	1
Garry Wins Linares & Bows Out	1
Call for Best Games & Combos	1
LIICL Team Standings	1
Individual Standings After Round 11 ...	2
LIICL Directory	3
Zwischenzug with Jimocz	4
Team Results - Round 11	5
LIICL Regular Season Schedule Rev. E.	6

Individual Class Standings After Round 11

Rating	Name	Team	PPR	G	W	L	D	Bye
Class A								
2104	Berg, George	NGC	4.33	9	6	0	3	2
1955	Rizzo, Robert	NGC	4.33	9	6	0	3	2
2064	Chipkin, Len	EDO	4.11	9	5	0	4	2
1950	Wilkie, Clayton	NGC	3.89	8	6	1	1	2
1940	Romero, Steve	EDO	3.67	9	4	1	4	2
1982	Hodos, Julian	ALE	3.40	10	4	2	4	1
2068	Panico, Nick III	PRA	3.22	8	5	3	0	2
1960	Leone, Dave	LSF	3.20	9	5	3	1	1
2001	Cranston, Tim	PRA	2.78	6	3	1	2	2
1916	Bonfante, Charles	LSF	2.60	6	2	0	4	1
1929	Wisbauer, Robert	PRA	2.33	4	3	1	0	2
Class B								
1779	Marley, Ken T	NGC	4.11	8	7	1	0	2
1883	Hom, Dennis	PRA	3.67	7	6	1	0	2
1817	Alikakos, George	EDO	3.22	9	5	4	0	2
1868	Dwulit, James	PRA	3.22	5	5	0	0	2
1717	Muttreja, Suresh	ADE	3.00	9	4	4	1	2
1807 /5	Frohreich, Frank	ALD	2.80	10	4	5	1	1
1749	Sommese, Anthon	PRA	2.56	5	3	1	1	2
1681	Montenero, Paul	CCC	2.33	9	3	6	0	2
1799	Solomon, Steve	ADE	2.11	6	1	2	3	2
1711	Standing, Robert	LSF	1.80	5	2	3	0	1
Class C								
1704	Kolczynski, Jim	LSF	3.80	10	7	3	0	1
1748	Viale, Richard	CCC	3.67	9	5	2	2	2
1616	Ogen, Tom	ADE	3.22	7	5	2	0	2
1628	Insogna, Matt	ADE	2.33	9	3	6	0	2
1598	Shattuck, John	ALD	2.20	5	3	2	0	1
1632	Spreckles, Charle	EDO	2.11	7	2	4	1	2
1609	Rusch, Ed	ALD	2.00	9	2	6	1	1
1519	Goldman, Mel	ALC	1.89	9	1	6	2	2
1564	Celaru, Adrian	ALE	1.60	7	1	5	1	1
1638 /6	Watnick, Mel	ALC	1.44	9	1	8	0	2
1555	Kingsley, John	ALC	1.44	5	1	4	0	2
1595	Lichioveri, Domini	EDO	1.44	1	1	0	0	2
1690	Ulfers, Ed	ALD	1.00	2	0	2	0	1
Class D								
1446	Warnock, Andy	CCC	2.78	7	4	3	0	2
1433	Greenwald, Justin	LSF	2.60	10	4	6	0	1
1260	Bilkis, Sy	ALE	2.20	8	3	5	0	1
1303	Loshin, Al	ALC	1.89	5	2	3	0	2
1534 /5	Egert, George	NGC	1.89	2	2	0	0	2
1418 /4	Thomas, Walter	ALE	1.80	7	2	5	0	1
1507	Goldstein, Carrie	ALE	1.80	7	2	5	0	1
UNR /1	DePrisco, William	IND	1.73	3	2	1	0	0
1410	Mastandrea, Robe	ALC	1.67	8	1	6	1	2
1487	Proffman, Paul	CCC	1.67	5	1	3	1	2
1487	Solomon, Zack	ADE	1.44	2	1	1	0	2
1086 /6	Zunino, Hugo	ALD	1.40	9	1	8	0	1
UNR /1	Hodos, Remir	ALE	1.20	1	0	0	1	1
1501 USCF	Lamb, Terry	CCC	1.00	1	0	1	0	2
1090 /5	Montenero, Paul R	CCC	1.00	3	0	3	0	2
UNR /1	Hoteplopez, Angel	ALD	1.00	0	0	0	0	1
UNR /1	Gray, Glenn	IND	1.00	0	0	0	0	0

The League Leader

www.liicl.com

Editor-in-Chief
Robert Rizzo

Copy Editor
Clayton Wilkie

Photography
Kathy Dwulit
Kevin Mahoney

Board of Directors

President
George Alikakos

Treasurer
John Kingsley

Rules Director
Tony Sommese

Executive Board

Ademco/KSF
Tom Ogen

EDO
George Alikakos

Alumni C
John Kinglsey

Clear-Cut
Paul Montenero

Alumni D
Ed Rusch

Life Service Foundation
Robert Standing

Northrop Grumman
George Berg

Alumni E
Red Bilkis

Photon
Jim Dwulit

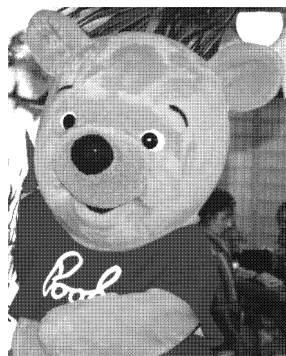
The League Leader, © 2005, Long Island Industrial Chess League, is published approximately biweekly during the Long Island Industrial League season from October to May each year. The Long Island Industrial Chess League is a non-profit organization founded for the purpose of promoting goodwill and friendship through the game of chess and to conduct tournaments, matches and other forms of chess competition. Neither the LIICL nor its members assume any responsibility for the accuracy of the information contained herein. No reproduction in part nor in full may be made without the expressed written consent of the Board of Directors of the Long Island Industrial Chess League. Requests and inquiries may be made in writing to:

Board of Directors
LIICL
144 Roxbury Avenue
Oakdale, NY 11769

LIICL Directory

September 29, 2004

<u>Name</u>	<u>Function</u>	<u>Telephone</u>	<u>E-mail</u>
Alikakos, George	EDO, Captain President, LIICL	718-836-1250 (H) 631-595-6043 (W)	george.alikakos@DP.ail.com
Berg, George	Northrop Grumman, Captain	516-346-9111 (W) 516-938-5370 (H)	george.berg@ngc.com
Dwulit, Jim	Photon Research Assocs., Captain	631-467-7565 (H) 631-331-6482 (W)	dwulit@photon.com
Red Bilkis	Alumni E, Captain	631-543-7502 (H)	seybilk@suffolk.lib.us acelaru@veeco.com
Kingsley, John	Alumni C, Captain Treasurer, LIICL	631-563-2108 (H)	JKingsley@msn.com
Ogen, Thomas	Ademco/KSF, Captain	718-446-5443 (H) 516-921-6704 x2880 (W)	Tom_Ogen@ademco.com
Sommese, Tony	Rules Director, LIICL	631-331-6322 (W)	sommese@photon.com
Montenero, Paul	Clear-Cut Computing, Captain		clearcut@mindspring.com
Rizzo, Robert	Editor, League Leader	516-575-2306 (W) 516-378-1342 (H)	robert.rizzo@ngc.com rrizknight@juno.com
Rusch, Ed	Alumni D, Captain	516-735-0417 (H)	
Standing, Robert	LSF, Captain	631-271-6120 (H)	
Huntington Library	Playing Site	631-427-5165	ammurphy@suffolk.lib.ny.us
LIICL	Board of Directors		www.liicl.com



Zwischenzug with Jimocz

I can't believe it is time for the

Linares tournament already. Linares is an annual tournament of the strongest players in the world. This year the only notable missing person is Vlady Kramnik. All the other top dogs are playing. By the time this is read the tournament will be over and Kasparov will have won it. (He is currently at a +5 score with a 2900+ performance with 1 round to go). Kaspy is playing marvelous chess. He played a beautiful game against the current FIDE world champion, Kasimdzhanov in which he won. Then he played an even better game against Mickey Adams, Britain's strongest player. Go over these games, they are true measures of Kasparov's great play.

In mere mortal games, I am reviewing a few from round 11. In the game Dwulit-Lamb, White started to play a King's Gambit against the LIICL newcomer. Lamb immediately shot back with the dreaded Falkbeer Counter Gambit. Now instead of playing the aggressor, Dwulit was the aggressee!

The game followed a rare book line after 4. Nc3, the more common move is to confront the pawn with 4. d3, however White wished to play a little off main line since the Falkbeer is not his specialty. The last book move according to Fritz was 8. Nge2. Just after the game, Dwulit felt that this move caused great difficulty and he preferred the other move he was going to play, 8. Qf3. Terry sac'd another pawn with his 8...c6 Fritz recommended 8...Bxc3. So after Dwulit took the second pawn he suffered for his material grab until Lamb played 14... Nd5. This allowed White to break up Black's attack with 15. Bxh7+!

(see diagram 1)

After 15...Kxh7 16. Qxd5 Fritz has White with a +/- . Lamb wanted to mix it up a bit since his attack was quickly slipping away so he tried 17...Rxe2+?!

(see diagram 2).

After 18. Kxe2, Fritz gives a +- — in other The League Leader, Vol. XV, No. 12

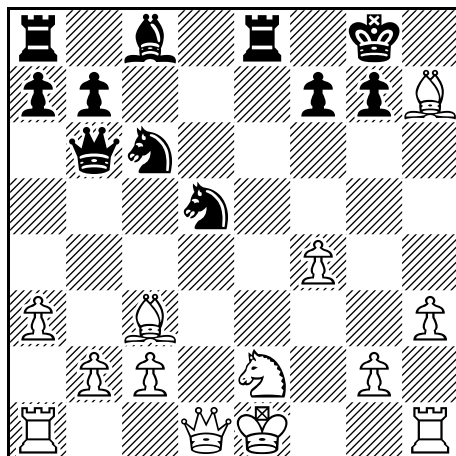


Diagram 1 Dwulit – Lamb Position after 15. Bxh7+

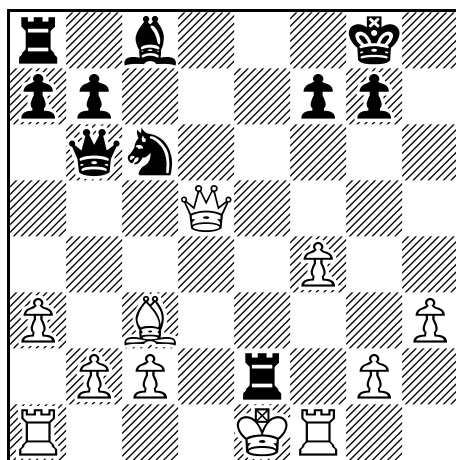


Diagram 2 Dwulit – Lamb After 17 ... Rxe2+

words at this point Fritz thinks White should win the game. Black missed the zwischenzug, 19. Qg5 threatening mate otherwise his attack would have continued. Black played on for a few more moves. White missed an easier win on move 43 h7. However, 43. Rg7 is a much easier win since it wins the Bishop queens the pawn. Anyhow, an exciting game between Dwulit and Lamb.

In another game from this round Bob Wisbauer won a game from Rich Viale. The game opened 1. c4 f5 so you knew it was going to be an interesting battle. Unfortunately, Fritz gives White a +/- at move 5. d4 and a +/- at move 18. dxe5

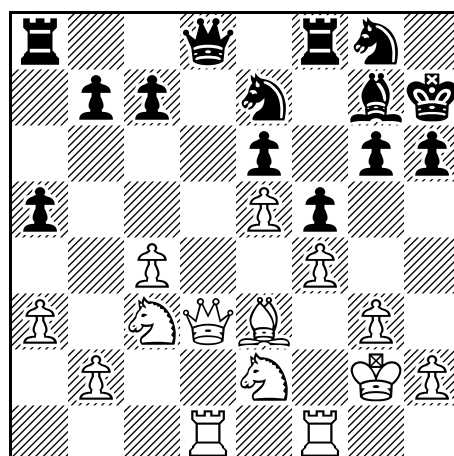


Diagram 3 Wisbauer-Viale after 18. dxe5

The game was an unusual one and merits a replay.

The last game from last week is the Montenero – Hom game. Dennis starts a strange King March on move 18...Kf7 but it seems to work with the net payoff of a win.

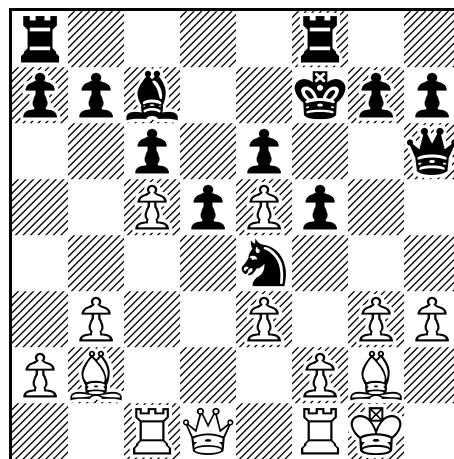


Diagram 4 Montenero - Hom 18...Kf7

Montenero played a miscue on move 24

(see diagram 5)

which allowed Hom to establish a lasting advantage and a Fritz +/- evaluation. Paul played 24 fxg4 instead of 24 fxe4. Hom played 24...fxg5 which forced White to move his bishop and allow an opening into his King.

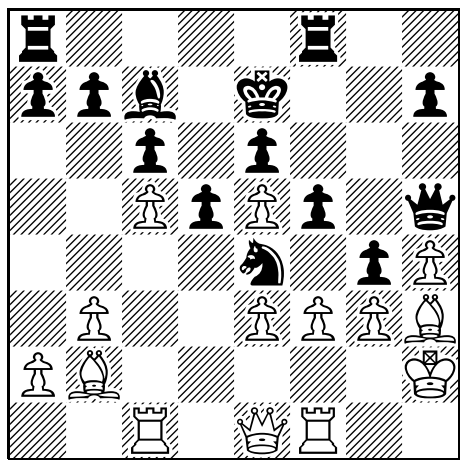


Diagram 5 Montenero - Hom after 23g4

After 25. Bg2 Rxf1 Fritz considers it Black's game and assigns -+ to its evaluation. Dennis finished the game nicely to claim the victory.

Remember to tell them Jimocz sent you! Here are the games discussed in today's column.

[Event "LIICL 2004-2005"]
 [Site "Huntington Library"]
 [Date "2005.02.25"]
 [Round "11"]
 [White "J. Dwulit"]
 [Black "Terry Lamb"]
 [Result "1-0"]
 [ECO "C31"]

e4 e5 2. f4 d5 3. exd5 e4 4. Nc3 Nf6 5. d3 Bb4 6. Bd2 exd3 7. Bxd3 O-O 8. Nge2 c6 9. a3 Ba5 10. dxc6 Nxc6 11. h3 Bb6 12. Na4 Re8 13. Nxb6 Qxb6 14. Bc3 Nd5 15. Bxh7+ Kxh7 16. Qxd5 Kg8 17. Rf1 Rxe2+ 18. Kxe2 Be6 19. Qg5 Bc4+ 20. Kf3 Nd4+ 21. Bxd4 Qxd4 22. Rfd1 Qxb2 23. Rd8+ Rxd8 24. Qxd8+ Kh7 25. Rd1 Qxa3+ 26. Kf2 Qc5+ 27. Qd4 Qxd4+ 28. Rxd4 Bb5 29. c4 Bc6 30. c5 f6 31. g4 Kg6 32. h4 Kf7 33. g5 fxg5 34. fxg5 Kg6 35. Kg3 Kf5 36. Kf2 Ke5 37. Ke3 a6 38. Rf4 Bd5 39. h5 Bg8 40. h6 gxh6 41. gxh6 Kd5 42. Rf7 Kxc5 43. h7 Bxh7 44. Rxh7 b5 45. Kd3 Kb4 46. Kc2 Ka4 47. Kb2 a5 48. Rh3 Kb4 49. Rh4+ Kc5 50. Kb3 Kd5 51. Rh5+ Kc6 52. Kc3 Kb6 53. Rg5 Kc6 54. Kd4 Kb6 55. Rg6+ Ka7 56. Kc5 1-0

[Event "LIICL"]
 [Site "Huntington Library"]
 [Date "2005.02.25"]
 [Round "11"]
 [White "Wisbauer"]
 [Black "Viale"]
 [Result "1-0"]

1. c4 f5 2. g3 Nf6 3. Bg2 d6 4. Nc3 g6 5. d4 e6 6. a3 Bg7 7. Qd3 a5 8. e4 O-O 9. Nge2 Nc6 10. O-O Bd7 11. Bg5 h6 12. Bc1 Kh7 13. f4 Ng8 14. Be3

Nce7 15. e5 Bc6 16. Rad1 Bxg2 17. Kxg2 dxe5 18. dxe5 Nc6 19. Nb5 Qe7 20. Qd7 Rf7 21. Qxe7 Rxe7 22. Rd3 b6 23. Rfd1 Rae8 24. Rd7 Nb8 25. Rxc7 Rxc7 26. Nxc7 Rc8 27. Bxb6 a4 28. Nd4 Nd7 29. c5 Nxc5 30. Bxc5 Rxc7 31. Nxe6 Rb7 32. Bb4 Ne7 33. Nxxg7 Kxxg7 34. Bxe7 Rxe7 35. Rd4 Rc7 36. Rxa4 Rc2+ 37. Kh3 Rxb2 38. Ra7+ Kg8 39. a4 g5 40. fxg5 hxg5 41. Ra6 Kg7 42. Rf6 g4+ 43. Kh4 Rxh2+ 44. Kg5 Rg2 45. Kxf5 Rxg3 46. Rg6+ Kf7 47. Rxg4 Rf3+ 48. Rf4 Re3 49. Rb4 Rf3+ 50. Ke4 Rf1 51. Rb7+ Ke6 52. Rb6+ Kd7 53. a5 Ra1 54. Rd6+ Kc7 55. a6 Re1+ 56. Kf5 Rf1+ 57. Ke6 Re1 58. a7 Kb7 59. Ra6 Ka8 60. Kf6 Rf1+ 61. Ke7 Rh1 62. e6 Rh7+ 63. Kd8 Rh8+ 64. Kd7 Rh6 65. Ra1 Rh2 66. Rd1 1-0

[Event "LIICL"]
 [Site "Hunt. Lib."]
 [Date "2005.02.25"]
 [Round "11"]
 [White "P. Montenero [CCC]"]
 [Black "D. Hom [PRA]"]
 [Result "0-1"]
 [Opening "Reti opening"]
 [ECO "A09"]
 [WhiteELO "1681"]
 [BlackELO "1883"]
 [EventDate "2005.02.25"]

1. Nf3 d5 2. c4 e6 3. b3 f5 4. Ne5 Nf6 5. g3 Bd6 6. Bb2 O-O 7. Bg2 c6 8. O-O Nbd7 9. d4 Qe7 10. Nd2 Ne4 11. Rc1 Qf6 12. Ndf3 Qh6 13. c5 Bc7 14. e3 Ndf6 15. h3 Bd7 16. Nxd7 Nxd7 17. Ne5 Nxe5 18. dxe5 Kf7 19. Qe1 Qg6 20. h4 Ke7 21. Kh2 Qh5 22. Bh3 g5 23. f3 g4 24. fxg4 fxg4 25. Bg2 Rxf1 26. Qxf1 Rf8 27. Qe1 Bxe5 28. Bxe5 Qxe5 29. b4 Rf2 30. Kh1 Qxg3 31. Qxf2 Nxf2+ 0-1

[Event "XXII SuperGM"]
 [Site "Linares ESP"]
 [Date "2005.03.04"]
 [Round "9"]
 [White "Kasimdzhanov,R"]
 [Black "Kasparov,G"]
 [Result "0-1"]
 [WhiteElo "2678"]
 [BlackElo "2804"]
 [EventDate "2005.02.23"]
 [ECO "D47"]

1. d4 d5 2. c4 c6 3. Nc3 Nf6 4. e3 e6 5. Nf3 Nbd7 6. Bd3 dxc4 7. Bxc4 b5 8. Bd3 Bb7 9. O-O a6 10. e4 c5 11. d5 Qc7 12. dxe6 fxe6 13. Bc2 c4 14. Nd4 Nc5 15. Be3 e5 16. Nf3 Be7 17. Ng5 O-O 18. Bxc5 Bxc5 19. Ne6 Qb6 20. Nxf8 Rxf8 21. Nd5 Bxd5 22. exd5 Bxf2+ 23. Kh1 e4 24. Qe2 e3 25. Rfd1 Qd6 26. a4 g6 27. axb5 axb5 28. g3 Nh5 29. Qg4 Bxg3 30. hxg3 Nxxg3+ 31. Kg2 Rf2+ 32. Kh3 Nf5 33. Rh1 h5 34. Qxxg6+ Qxxg6 35. Rhg1 Qxxg1 36. Rxxg1+ Kf7 0-1

[Event "XXII SuperGM"]
 [Site "Linares ESP"]
 [Date "2005.03.08"]
 [Round "12"]
 [White "Adams,Mi [ENG]"]
 [Black "Kasparov,G [RUS]"]
 [Result "0-1"]
 [Opening "Sicilian Najdorf"]
 [ECO "B90"]
 [WhiteELO "2741"]
 [BlackELO "2804"]

1. e4 c5 2. Nf3 d6 3. d4 cxd4 4. Nxd4 Nf6 5. Nc3 a6 6. Be3 e6 7. Be2 Qc7 8. Qd2 b5 9. a3 Bb7 10. f3 Nc6 11. 0-0-0 b4 12. axb4 Nxb4 13. g4 Be7 14. g5 Nd7 15. h4 Nc5 16. Kb1 Rb8 17. h5 0-0 18. g6 Bf6 19. Rgd1 Ba8 20. Bg5 Be5 21. gxh7+ Kxh7 22. Nb3 Nxc2 23. Nxc5 Na3+ 24. Ka2 Qxc5 25. Na4 Nc2 26. Kb1 Qa3 0-1

Team Results - Round 11

Feb. 25, 2005

PRA	CCC	Alumni C	Alumni D
-----	-----	-----	-----
Wisbauer R	1.0 0.0	Viale R	Watnick M 0.0 1.0
Hom D	1.0 0.0	Montenero PJ	Goldman M 0.0 1.0
Dwulit J	1.0 0.0	Lamb T	Mastandrea R 0.0 1.0
Sommese A	0.5 0.5	Proffman P	Loshin A 1.0 0.0
	3.5 0.5		1.0 3.0
Alumni E	Ademco/KSF	NGC	LSF
-----	-----	-----	-----
Hodos J	0.5 0.5	Solomon S	Berg G 1.0 0.0
Celaru A	0.0 1.0	Muttreja S	Rizzo R 1.0 0.0
Thomas W	0.0 1.0	Insogna M	Wilkie C 1.0 0.0
Bilkis S	1.0 0.0	Forfeit	Marley K 1.0 0.0
	1.5 2.5		4.0 0.0

