



# The League Leader

The Official Newsletter of the Long Island Industrial Chess League

Volume XV, Number 14

[www.liicl.com](http://www.liicl.com)

April 1, 2005

## Alumni C Advances

### Team Results - Playoff Round 1

Mar. 18, 2005

Alumni D		Alumni C
Frohreich F	0.0 1.0	Kingsley J
Shattuck J	1.0 0.0	Watnick M
Rusch E	0.0 1.0	Goldman M
Zunino H	0.0 1.0	Loshin A
	1.0 3.0	

### Results - Individual Round 1

Mar. 18, 2005

White		Black
Berg G	1.0 0.0	Sommese A
Standing R	0.0 1.0	Cranston T
Leone D	1.0 0.0	Muttreja S
Montenero P	0.0 1.0	Rizzo R
Wilkie C	1.0 0.0	Insogna M
Lamb T	1.0 0.0	Panico N III
Romero S	1.0 0.0	Mastandrea R
Bilkis S	0.0 1.0	Alikakos G

### Quarterfinals are Set

Led by an upset win by their captain, John Kingsley, Alumni C waited until the first round of the playoffs to win a match this season. Talk about winning when it counts! In beating Alumni D by a 3-1 score they are rewarded by getting paired with Northrop Grumman in the playoff quarterfinals. The Alumni C team will have white on board one in that contest.

The other quarterfinal match-ups were determined at the end of the regular season. They include Life Service Foundation with white on board one vs. Clear-Cut Computing, Ademco/KSF with white one board one vs. EDO and Alumni E with white on board one vs. Photon Research Associates. The chart on page 6 shows that Northrop Grumman, Life Service Foundation, EDO and Photon Research Associates all have tie-break odds.

Tie-breaks will be applied in the following order. If the original match is tied at the end of play then both teams will start another match at game/5 time controls. All USCF rules will apply except it is clock move not touch move. Should both teams still be tied after

### Only Two Ronnies Undetermined

The Ronnie Awards for Regular Season play have been calculated and announced. Only the Best Game and Best Combination which can come from playoffs and Individual games remain up for grabs.

This season we have the rare triple-winner in the person of Rich Viale. Rich who studies the game more than most has captured Most Improved Player, Best Upset Win and co-Class C champion awards. He has a chance for a 5-bagger if he wins the two remaining prizes!

George Berg is a double-winner having earned Class A (MVP) honors as well as this year's Highest Performance Rating.

that speed round, then the team with the tie-break odds would advance in the playoffs to the next round and the other team would be eliminated.

All games played at the first time control in the playoffs also count toward the Individual Swiss tournament.

### In This Issue

Team Results - Playoff Round 1 . . . . .	1
Results - Individual Round 1 . . . . .	1
Quarterfinals are Set . . . . .	1
Only Two Ronnies Undetermined . . . . .	1
LIICL Final Team Standings . . . . .	1
2005 Individual Swiss Standings . . . . .	2
George Berge Draws with GM Kudrin . . . . .	2
LIICL Directory . . . . .	3
Rules of Conduct for LIICL Play . . . . .	4
LIICL 2004-05 Playoff Ratings . . . . .	5
2004-05 Playoff LIICL Tie-Break Chart . . . . .	6
2004-05 LIICL Playoff Brackets . . . . .	7
LIICL Regular Season Schedule Rev. E . . . . .	8

### 2004-2005 LIICL Final Regular Season Team Standings

Team	Team LIICL Rating Pts/Rd	Games				Match				F
		W	L	D	Pts	W	L	D	Pts	
NGC	1952 16.80	28	4	8	32.0	9	1	0	9.0	0
PRA	1961 15.50	27	9	4	29.0	9	1	0	9.0	1
EDO	1866 13.90	20	10	10	25.0	7	3	0	7.0	1
LSF	1819 13.00	20	15	5	22.5	5	4	1	5.5	0
CCC	1574 10.40	15	22	3	16.5	2	5	3	3.5	2
Ademco/KSF	1698 10.40	14	21	5	16.5	5	5	0	5.0	2
Alumni E	1569 10.00	12	22	6	15.0	2	6	2	3.0	0
Alumni D	1659 9.00	12	26	2	13.0	2	7	1	2.5	2
Alumni C	1448 7.80	8	29	3	9.5	0	9	1	0.5	0

## 2005 LIICL Individual Championship Standings

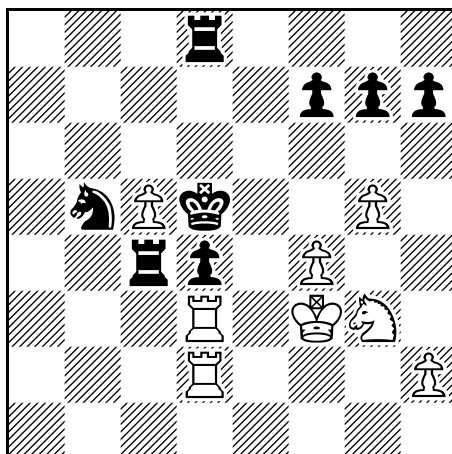
#	Name	Rtng	Team	Rd 1	Total	TB[S]	TB[C]	TB[O]
1	George Berg	2142	NGC	W16	1.0	0.0	1.0	0.0
2	Tim Cranston	1983	PRA	W17	1.0	0.0	1.0	0.0
3	Dave Leone	1979	LSF	W18	1.0	0.0	1.0	0.0
4	Robert Rizzo	1976	NGC	W19	1.0	0.0	1.0	0.0
5	Clayton Wilkie	1969	NGC	W20	1.0	0.0	1.0	0.0
6	Steve Romero	1954	EDO	W23	1.0	0.0	1.0	0.0
7	George Alikakos	1800	EDO	W24	1.0	0.0	1.0	0.0
8	John Shattuck	1603	ALD	W22	1.0	0.0	1.0	0.0
9	John Kingsley	1588	ALC	W15	1.0	0.0	1.0	0.0
10	Mel Goldman	1506	ALC	W21	1.0	0.0	1.0	0.0
11	Terry Lamb	1501	CCC	W14	1.0	0.0	1.0	0.0
12	Al Loshin	1311	ALC	W25	1.0	0.0	1.0	0.0
13	Victor Ben-Ami	UNR	NGC	H—	0.5	0.0	0.5	0.0
14	Nick III Panico	1958	PRA	L11	0.0	1.0	0.0	1.0
15	Frank Frohreich	1837	ALD	L9	0.0	1.0	0.0	1.0
16	Tony Sommesse	1816	PRA	L1	0.0	1.0	0.0	1.0
17	Robert Standing	1723	LSF	L2	0.0	1.0	0.0	1.0
18	Suresh Muttreja	1712	ADE	L3	0.0	1.0	0.0	1.0
19	Paul Montenero	1690	CCC	L4	0.0	1.0	0.0	1.0
20	Matt Insogna	1615	ADE	L5	0.0	1.0	0.0	1.0
21	Ed Rusch	1589	ALD	L10	0.0	1.0	0.0	1.0
22	Mel Watnick	1556	ALC	L8	0.0	1.0	0.0	1.0
23	Bob Mastandrea	1399	ALC	L6	0.0	1.0	0.0	1.0
24	Sy Bilkis	1244	ALE	L7	0.0	1.0	0.0	1.0
25	Hugo Zunino	1054	ALD	L12	0.0	1.0	0.0	1.0

### George Berg Draws With GM Kudrin

Kudrin, Sergey (2646)  
 Berg, G (2060)  
 [B87]  
 USATE  
 Round 4  
 Parsippany, NJ  
 2005

Nb5 44. Kf2 Kd7 45. Ng3 Kc6 46. g5?! [46. Kf3 Re8 47. Ne4 Kd5=] 46... Kd5 47. Kf3 Rc4 48. Rcd2 George stands better here but how often does a GM offer you a draw? [48. Rcd2 Kxc5 49. Ne4+ (49. Nh5 Rg8 50. f5 Rc3 51. Nf4) 49... Kd5 50. Rb3 -/+ ] ½-½

1.e4 c5 2.Nf3 d6 3.d4 cxd4 4.Nxd4 Nf6 5.Nc3 a6 6.Bc4 e6 7.Bb3 b5 8.0-0 Be7 9.Qf3 Qb6 10.Bg5 Nbd7 11.Rad1 0-0 12.Rfe1 Nc5 13.Qg3 Kh8 14.Qh4 Qb7 15.Re3 Ng8 16.Bxe7 Qxe7 17.Qg3 Bb7 18.a3 Nf6 19.Qh4 Nd5 20.Qxe7 Nxe7 21.Ba2 Rfd8 22.Nf3 Kg8 23.b4 Na4 24.Nxa4 bxa4 25.c4 Rac8 26.Ne1 Kf8 27.Nd3 Ng8 28.Nb2 Bc6 29.Bb1 Ke7 30.f3 Nf6 31.Red3 Ne8 32.Bc2 [George was expecting 32.R1d2 ] 32...a5 33.R1d2 axb4 34.axb4 d5 35.exd5 exd5 36.c5 [36.cxd5 Rxd5 37.Rxd5 Bxd5 38.Nxa4 Be6 39.Nc5 is convincing for white] 36...Rb8 37.Bxa4 Bxa4 38.Nxa4 Rxb4 39.Nc3 d4 40.Ne2 Rc8 41.Rc2 Rd8 42.g4 [42.Rcd2 George recommended this as preferable to the game move] 42...Nc7 43.f4



Final Position

### *The League Leader*

www.liicl.com

Editor-in-Chief  
Robert Rizzo

Copy Editor  
Clayton Wilkie

Photography  
Kathy Dwulit  
Kevin Mahoney

#### Board of Directors

President  
George Alikakos

Treasurer  
John Kingsley

Rules Director  
Tony Sommesse

#### Executive Board

Ademco/KSF  
Tom Ogen

EDO  
George Alikakos

Alumni C  
John Kinglsey

Clear-Cut  
Paul Montenero

Alumni D  
Ed Rusch

Life Service Foundation  
Robert Standing

Northrop Grumman  
George Berg

Alumni E  
Red Bilkis

Photon  
Jim Dwulit

*The League Leader*, © 2005, Long Island Industrial Chess League, is published approximately biweekly during the Long Island Industrial Chess League season from October to May each year. The Long Island Industrial Chess League is a non-profit organization founded for the purpose of promoting goodwill and friendship through the game of chess and to conduct tournaments, matches and other forms of chess competition. Neither the LIICL nor its members assume any responsibility for the accuracy of the information contained herein. No reproduction in part nor in full may be made without the expressed written consent of the Board of Directors of the Long Island Industrial Chess League. Requests and inquiries may be made in writing to:

Board of Directors  
LIICL  
144 Roxbury Avenue  
Oakdale, NY 11769

## LIICL Directory

September 29, 2004

<u>Name</u>	<u>Function</u>	<u>Telephone</u>	<u>E-mail</u>
Alikakos, George	EDO, Captain President, LIICL	718-836-1250 (H) 631-595-6043 (W)	george.alikakos@DP.ail.com
Berg, George	Northrop Grumman, Captain	516-346-9111 (W) 516-938-5370 (H)	george.berg@ngc.com
Dwulit, Jim	Photon Research Assocs., Captain	631-467-7565 (H) 631-331-6482 (W)	dwulit@photon.com
Red Bilkis	Alumni E, Captain	631-543-7502 (H)	geedad@optonline.net acelaru@veeco.com
Kingsley, John	Alumni C, Captain Treasurer, LIICL	631-563-2108 (H)	JKingsley@msn.com
Ogen, Thomas	Ademco/KSF, Captain	718-446-5443 (H) 516-921-6704 x2880 (W)	Tom_Ogen@ademco.com
Sommese, Tony	Rules Director, LIICL	631-331-6322 (W)	sommese@photon.com
Montenero, Paul	Clear-Cut Computing, Captain		clearcut@mindspring.com
Rizzo, Robert	Editor, League Leader	516-575-2306 (W) 516-378-1342 (H)	robert.rizzo@ngc.com rrizknight@juno.com
Rusch, Ed	Alumni D, Captain	516-735-0417 (H)	
Standing, Robert	LSF, Captain	631-271-6120 (H)	
Huntington Library	Playing Site	631-427-5165	ammurphy@suffolk.lib.ny.us
LIICL	Board of Directors		www.liicl.com

## Rules of Conduct for LIICL Match Play

- 1) Games are played under USCF rules unless otherwise stated in the LIICL Constitution.
- 2) Time Control is game/90, with time delay clock it is game/85 +5 sec/move.
- 3) All play will start promptly at 6:50 PM. Any player not appearing by 7:50 PM, forfeits the game.
- 4) A primary Tournament Director (D) will be announced before the onset of play each round. A secondary TD (S) will be announced at that time who will preside over any match that the involves a team which belongs to the same organization as the primary TD.
- 5) Each team is responsible to provide two boards, two sets and two chess clocks.
- 6) All moves must be recorded except if either player has less than five minutes remaining. If moves are not recorded, any claim of repetition is void.
- 7) Clocks must face outward toward the aisle and away from any wall. The TD must have clear visibility. Black has choice of which side he/she wishes to place the clock. Once this is established, then players must rotate the board so as to satisfy the visibility requirement. This may require that not all members of any team will be sitting on the same side of the table.
- 8) Players must sit in order of LIICL rating. If a player is late, the team may postpone assigning players to boards since alternates, if available, must sit in board order. In any case, clocks will start at 6:50 PM. If a board is unfilled and forfeit, this shall not cause the forfeit of any lower board (this is an exception from USCF rules).
- 9) If both opponents are late, the elapsed time should be divided evenly among them upon arrival of the first player.
- 10) If an error was made in setting the clocks or if the clock is not functioning correctly, the time error shall corrected if it can be determined what the correct times should be. If a determination cannot be made, then the elapsed error shall be divided between the players. If this puts a player in severe time trouble or would cause a player to lose on time, then the time will be proportioned at the discretion of the TD.
- 11) To claim a win on time, you must have mating material. Otherwise the game is a draw. According to USCF laws, you must call your opponent's flag. If both flags are down, the game is a draw. Check-mate ends the game but it is always a good idea to stop your clock anyway just to eliminate any arguments.
- 12) With less than five minutes remaining on your clock, you must hit the clock with the same hand which moves the pieces.
- 13) If an illegal move is made, stop the clocks and call the TD. Two minutes will be added to your time if the TD establishes that the opponent has made an illegal move.
- 14) All players must move away from the playing table when their game is concluded. Loud post mortems, kibitzing and any other form of interference are prohibited and can be penalized by the ouster of the guilty party(ies) and/or banishment from the league.
- 15) Table numbers are assigned for each match on the playing schedule.
- 16) Match results, along with names of participants on each board, must be recorded on the results sheet provided and must be submitted to the Rules Director at the end of play.
- 17) A team captain may, without looking at or considering the board position of a game in progress:
  - a) ask a teammate to offer a draw,
  - b) instruct his teammate to accept or refuse a draw offer,or
  - c) tell his teammate the results of any completed games.
- 18) A player may ask his captain if he/she may:
  - a) tender a draw offer,
  - b) accept or reject a draw offer,or
  - c) the score of the match.
- 19) Any conversation among team members not specified in (17) or (18) is illegal.

## LIICL 2004-05 Playoff Ratings

<u>by Rating</u>			<u>by Name</u>			<u>by Team</u>		
Rating	Name	Team	Rating	Name	Team	Rating	Name	Team
2142	Berg, George	NGC	1800	Alikakos, George	EDO	1817	Solomon, Steve	ADE
2061	Chipkin, Len	EDO	2142	Berg, George	NGC	1712	Muttreja, Suresh	ADE
1983	Cranston, Tim	PRA	1244	Bilkis, Sy	ALE	1646	Ogen, Tom	ADE
1979	Leone, Dave	LSF	1916	Bonfante, Charles	LSF	1615	Insogna, Matt	ADE
1976	Rizzo, Robert	NGC	1556	Celaru, Adrian	ALE	1476	Solomon, Zack	ADE
1969	Wilkie, Clayton	NGC	2061	Chipkin, Len	EDO	1588	Kingsley, John	ALC
1966	Hodos, Julian	ALE	1983	Cranston, Tim	PRA	1556 /11	Watnick, Mel	ALC
1958	Panico, Nick III	PRA	UNR /2	DePrisco, William	ALD	1506	Goldman, Mel	ALC
1954	Romero, Steve	EDO	1886	Dwulit, James	PRA	1399	Mastandrea, Robe	ALC
1936	Wisbauer, Robert	PRA	1534 /5	Egert, George	NGC	1311	Loshin, Al	ALC
1916	Bonfante, Charles	LSF	1837 /11	Frohreich, Frank	ALD	1837 /11	Frohreich, Frank	ALD
1909	Hom, Dennis	PRA	1506	Goldman, Mel	ALC	1674	Ulfers, Ed	ALD
1886	Dwulit, James	PRA	1485	Goldstein, Carrie	ALE	1603	Shattuck, John	ALD
1837 /11	Frohreich, Frank	ALD	UNR /1	Gray, Glenn	IND	1589	Rusch, Ed	ALD
1817	Solomon, Steve	ADE	1425	Greenwald, Justin	LSF	1054 /9	Zunino, Hugo	ALD
1816	Sommese, Anthon	PRA	1966	Hodos, Julian	ALE	UNR /1	Hoteplopez, Angel	ALD
1800	Alikakos, George	EDO	UNR /1	Hodos, Remir	ALE	UNR /2	DePrisco, William	ALD
1774	Marley, Ken T	NGC	1909	Hom, Dennis	PRA	1966	Hodos, Julian	ALE
1754	Viale, Richard	CCC	UNR /1	Hoteplopez, Angel	ALD	UNR /1	Hodos, Remir	ALE
1723	Standing, Robert	LSF	1615	Insogna, Matt	ADE	1556	Celaru, Adrian	ALE
1712	Muttreja, Suresh	ADE	1588	Kingsley, John	ALC	1485	Goldstein, Carrie	ALE
1707	Kolczynski, Jim	LSF	1707	Kolczynski, Jim	LSF	1453 /7	Thomas, Walter	ALE
1690	Montenero, Paul	CCC	1501 USC	Lamb, Terry	CCC	1244	Bilkis, Sy	ALE
1674	Ulfers, Ed	ALD	1979	Leone, Dave	LSF	1754	Viale, Richard	CCC
1646	Ogen, Tom	ADE	1595	Lichioveri, Domini	EDO	1690	Montenero, Paul	CCC
1618	Spreckles, Charle	EDO	1311	Loshin, Al	ALC	1501 USC	Lamb, Terry	CCC
1615	Insogna, Matt	ADE	1774	Marley, Ken T	NGC	1480	Proffman, Paul	CCC
1603	Shattuck, John	ALD	1399	Mastandrea, Robe	ALC	1427	Warnock, Andy	CCC
1595	Lichioveri, Domini	EDO	1690	Montenero, Paul	CCC	1111 /6	Montenero, Paul R	CCC
1589	Rusch, Ed	ALD	1111 /6	Montenero, Paul R	CCC	2061	Chipkin, Len	EDO
1588	Kingsley, John	ALC	1712	Muttreja, Suresh	ADE	1954	Romero, Steve	EDO
1556 /11	Watnick, Mel	ALC	1646	Ogen, Tom	ADE	1800	Alikakos, George	EDO
1556	Celaru, Adrian	ALE	1958	Panico, Nick III	PRA	1618	Spreckles, Charle	EDO
1534 /5	Egert, George	NGC	1480	Proffman, Paul	CCC	1595	Lichioveri, Domini	EDO
1506	Goldman, Mel	ALC	1976	Rizzo, Robert	NGC	UNR /1	Gray, Glenn	IND
1501 USC	Lamb, Terry	CCC	1954	Romero, Steve	EDO	1979	Leone, Dave	LSF
1485	Goldstein, Carrie	ALE	1589	Rusch, Ed	ALD	1916	Bonfante, Charles	LSF
1480	Proffman, Paul	CCC	1603	Shattuck, John	ALD	1723	Standing, Robert	LSF
1476	Solomon, Zack	ADE	1817	Solomon, Steve	ADE	1707	Kolczynski, Jim	LSF
1453 /7	Thomas, Walter	ALE	1476	Solomon, Zack	ADE	1425	Greenwald, Justin	LSF
1427	Warnock, Andy	CCC	1816	Sommese, Anthon	PRA	2142	Berg, George	NGC
1425	Greenwald, Justin	LSF	1618	Spreckles, Charle	EDO	1976	Rizzo, Robert	NGC
1399	Mastandrea, Robe	ALC	1723	Standing, Robert	LSF	1969	Wilkie, Clayton	NGC
1311	Loshin, Al	ALC	1453 /7	Thomas, Walter	ALE	1774	Marley, Ken T	NGC
1244	Bilkis, Sy	ALE	1674	Ulfers, Ed	ALD	1534 /5	Egert, George	NGC
1111 /6	Montenero, Paul R	CCC	1754	Viale, Richard	CCC	1983	Cranston, Tim	PRA
1054 /9	Zunino, Hugo	ALD	1427	Warnock, Andy	CCC	1958	Panico, Nick III	PRA
UNR /1	Hoteplopez, Angel	ALD	1556 /11	Watnick, Mel	ALC	1936	Wisbauer, Robert	PRA
UNR /1	Hodos, Remir	ALE	1969	Wilkie, Clayton	NGC	1909	Hom, Dennis	PRA
UNR /1	Gray, Glenn	IND	1936	Wisbauer, Robert	PRA	1886	Dwulit, James	PRA
UNR /2	DePrisco, William	ALD	1054 /9	Zunino, Hugo	ALD	1816	Sommese, Anthon	PRA

## 2004-2005 LIICL Playoff Tie-Break Chart

	PRA	NGC	LSF	EDO	CCC	ALE	ALD	ALC
ADE	PRA 1-0-0	NGC 1-0-0	LSF 1-0-0	EDO 2-0-0	ADE 1-0-0	ADE 2-0-0	ADE 1-0-0	ADE 1-0-0
ALC	PRA 1-0-0	NGC 1-0-0	LSF 1-0-0	EDO 1-0-0	CCC 1-0-1	ALE 1-0-0	ALD 2-0-0	
ALD	PRA 1-0-0	NGC 1-0-0	LSF 1-0-0	EDO 1-0-0	CCC 1-0-1	ALE 1-0-0		
ALE	PRA 1-0-0	NGC 1-0-0	LSF 1-0-1	EDO 1-0-0	CCC 0-0-1 104 - 100			
CCC	PRA 1-0-0	NGC 1-0-0	LSF 1-0-0	EDO 1-0-0				
EDO	PRA 1-0-0	NGC 2-0-0	EDO 1-0-0					
LSF	PRA 2-0-0	NGC 1-0-0						
NGC	NGC 1-1-0 168 - 155							

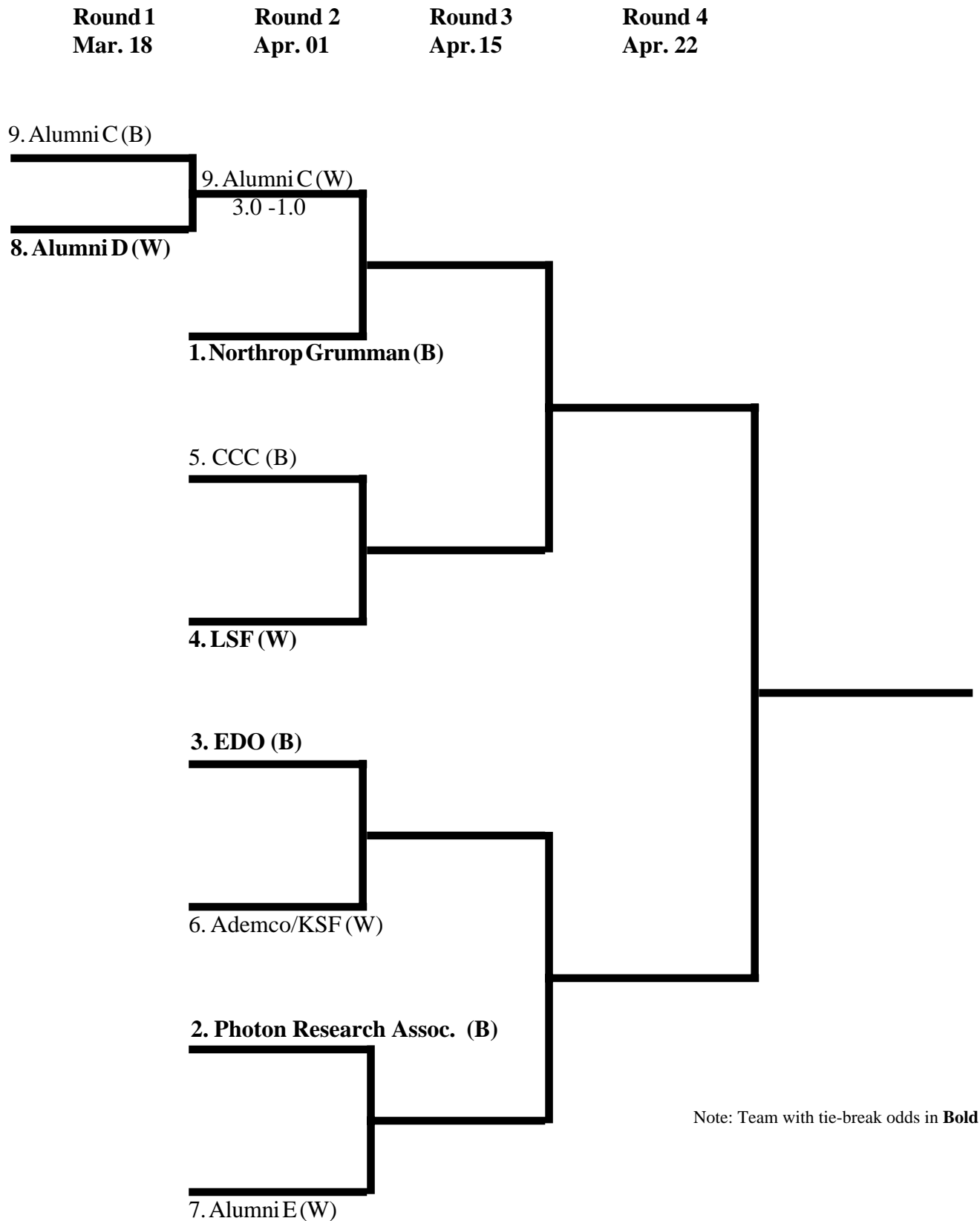
**Notes:**

For each possible match-up, the team with the Tie-Break odds is shown in the box  
 Head-to-head Match scores are shown if one team won the season series  
 If the season series Match scores are identical then LIICL Points are shown.



Paul Montenero of team "Paul J. Ragonnet" at the USATE

## 2004-2005 LIICL Playoff Brackets



Note: Team with tie-break odds in **Bold**

