

The League Leader

The Official Newsletter of the Long Island Industrial Chess League

Volume XV, Number 15

www.liicl.com

April 15, 2005

K-Rod's Check is in the Mail!

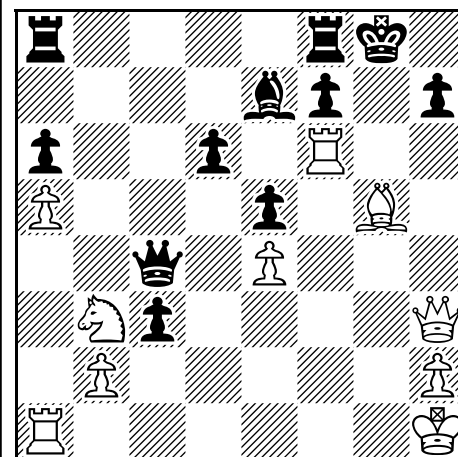
Team Results - Playoff Round 2

Apr. 1, 2005

Alumni C -----	NGC -----	Ademco/KSF -----	EDO -----
Kingsley J 0.0 1.0	Berg G	Muttreja S 0.0 1.0	Chipkin L
Watnick M 0.0 1.0	Rizzo R	Ogen T 0.0 1.0	Romero S
Goldman M 0.0 1.0	Wilkie C	Insogna M 0.5 0.5	Alikakos G
Loshin A 0.0 1.0	Marley K	Forfeit 0.0 1.0	Spreckles C
	0.0 4.0		0.5 3.5
LSF -----	CCC -----	Alumni E -----	PRA -----
Leone D 1.0 0.0	Viale R	Hodos J 0.5 0.5	Cranston T
Bonfante C 1.0 0.0	Montenero P	Celaru A 0.0 1.0	Panico Nick III
Kolczynski J 1.0 0.0	Lamb T	Goldstein C 0.0 1.0	Wisbauer R
Greenwald J 0.5 0.5	Proffman P	Bilkis S 0.0 1.0	Hom D
	3.5 0.5		0.5 3.5

Rodriguez is Featured in CL

LIICL Alumnus, Keith Rodriguez was the subject of a feature article in the April issue of Chess Life. Alex Dunne chose to highlight Keith's climb to the correspondence title of IM in his monthly column. Many of the LIICL veterans remember Keith as a charter LIICL member and captain of the Grumman team for a few years. In the article in CL, Keith shows his tactical brilliance with a move which most players would never consider because it seemingly puts a piece en pris. Can you guess white's stunner of a 25th move?



(continued on page 7)

Results - Individual Round 2

Apr. 1, 2005

White -----	Black -----
Lustig D 0.5 0.5	Frohreich F
Soto J 1.0 0.0	Standing R
Mastancrea R 0.0 1.0	Rusch E
Turiy 1.0 0.0	Shattuck J

Results - Rated Only Round 2

Apr. 1, 2005

White -----	Black -----
Dwulit J 1.0 0.0	Sommese A

In This Issue

Team Results - Playoff Round 2	1
Results - Individual Round 2	1
Results - Rated Only Round 2	1
Rodriguez is Featured in Chess Life . . .	1
LIICL Final Team Standings	1
2005 Individual Swiss Standings	2
LIICL Directory	3
Rules of Conduct for LIICL Play	4
LIICL 2004-05 Playoff Ratings	5
2004-05 Playoff LIICL Tie-Break Chart . .	6
2004-05 LIICL Playoff Brackets	7
LIICL Regular Season Schedule Rev. E .	8

2004-2005 LIICL Final Regular Season Team Standings

Team	Team LIICL Rating Pts/Rd	Games				Match				F
		W	L	D	Pts	W	L	D	Pts	
NGC	1952 16.80	28	4	8	32.0	9	1	0	9.0	0
PRA	1961 15.50	27	9	4	29.0	9	1	0	9.0	1
EDO	1866 13.90	20	10	10	25.0	7	3	0	7.0	1
LSF	1819 13.00	20	15	5	22.5	5	4	1	5.5	0
CCC	1574 10.40	15	22	3	16.5	2	5	3	3.5	2
Ademco/KSF	1698 10.40	14	21	5	16.5	5	5	0	5.0	2
Alumni E	1569 10.00	12	22	6	15.0	2	6	2	3.0	0
Alumni D	1659 9.00	12	26	2	13.0	2	7	1	2.5	2
Alumni C	1448 7.80	8	29	3	9.5	0	9	1	0.5	0

2005 LIICL Individual Swiss Standings

#	Name	Rtng	Team	Rd 1	Rd 2	Total	TB[S]	TB[C]	TB[O]
1	George Berg	2142	NGC	W34	W18	2.0	1.5	3.0	2.5
2	Clayton Wilkie	1969	NGC	W30	W17	2.0	1.5	3.0	2.5
3	Dave Leone	1979	LSF	W38	W31	2.0	0.5	3.0	1.0
4	Steve Romero	1954	EDO	W43	W32	2.0	0.5	3.0	1.0
5	Robert Rizzo	1976	NGC	W39	W40	2.0	0.0	3.0	0.0
6	Tim Cranston	1983	PRA	W41	D22	1.5	1.0	2.5	1.5
7	Kolman Turiy	1854	IND	H—	W21	1.5	1.0	2.0	2.0
8	Ken Marley	1774	NGC	H—	W20	1.5	1.0	2.0	2.0
9	Jim Kolczynski	1707	LSF	H—	W19	1.5	1.0	2.0	2.0
10	George Alikakos	1800	EDO	W42	D30	1.5	0.5	2.5	0.5
11	Robert Wisbauer	1936	PRA	H—	W35	1.5	0.5	2.0	1.0
12	Len Chipkin	2061	EDO	H—	W38	1.5	0.0	2.0	0.0
13	Charlie Bonfante	1916	LSF	H—	W39	1.5	0.0	2.0	0.0
14	Dennis Hom	1909	PRA	H—	W42	1.5	0.0	2.0	0.0
15	Jorge Soto	1620	IND	H—	W41	1.5	0.0	2.0	0.0
16	ChrIs Spreckles	1618	EDO	H—	B—	1.5	0.0	1.0	0.0
17	Mel Goldman	1506	ALC	W26	L2	1.0	3.0	2.0	4.0
18	John Kingsley	1588	ALC	W33	L1	1.0	2.5	2.0	3.5
19	Terry Lamb	1501	CCC	W23	L9	1.0	2.5	2.0	3.0
20	Al Loshin	1311	ALC	W37	L8	1.0	2.0	2.0	2.5
21	John Shattuck	1603	ALD	W40	L7	1.0	1.5	2.0	2.0
22	Julian Hodos	1966	ALE	H—	D6	1.0	1.5	1.5	2.5
23	Nick III Panico	1958	PRA	L19	W36	1.0	1.5	1.0	3.0
24	Paul Proffman	1480	CCC	H—	D25	1.0	1.0	1.5	1.5
25	Justin Greenwald	1425	LSF	H—	D24	1.0	1.0	1.5	1.5
26	Ed Rusch	1589	ALD	L17	W43	1.0	1.0	1.0	2.0
27	Darren Lustig	1643	IND	H—	D33	1.0	0.5	1.5	0.5
28	Jim Dwulit	1886	PRA	H—	H—	1.0	0.0	1.5	0.0
29	Victor Ben-Ami	UNR	NGC	H—	H—	1.0	0.0	1.5	0.0
30	Matt Insogna	1615	ADE	L2	D10	0.5	3.5	0.5	5.5
31	Rich Viale	1754	CCC	H—	L3	0.5	2.0	1.0	3.0
32	Tom Ogen	1646	ADE	H—	L4	0.5	2.0	1.0	3.0
33	Frank Frohreich	1837	ALD	L18	D27	0.5	2.0	0.5	3.5
34	Tony Sommese	1816	PRA	L1	H—	0.5	2.0	0.5	3.0
35	Carrie Goldstein	1485	ALE	H—	L11	0.5	1.5	1.0	2.0
36	Adrian Celaru	1556	ALE	H—	L23	0.5	1.0	1.0	1.0
37	Hugo Zunino	1054	ALD	L20	H—	0.5	1.0	0.5	2.0
38	Suresh Muttreja	1712	ADE	L3	L12	0.0	3.5	0.0	5.0
39	Paul Montenero	1690	CCC	L5	L13	0.0	3.5	0.0	5.0
40	Mel Watnick	1556	ALC	L21	L5	0.0	3.0	0.0	5.0
41	Robert Standing	1723	LSF	L6	L15	0.0	3.0	0.0	4.5
42	Sy Bilkis	1244	ALE	L10	L14	0.0	3.0	0.0	4.5
43	Bob Mastandrea	1399	ALC	L4	L26	0.0	3.0	0.0	4.0

The League Leader

www.liicl.com

Editor-in-Chief
Robert Rizzo

Copy Editor
Clayton Wilkie

Photography
Kathy Dwulit
Kevin Mahoney

Board of Directors

President
George Alikakos

Treasurer
John Kingsley

Rules Director
Tony Sommese

Executive Board

Ademco/KSF
Tom Ogen

EDO
George Alikakos

Alumni C
John Kinglsey

Clear-Cut
Paul Montenero

Alumni D
Ed Rusch

Life Service Foundation
Robert Standing

Northrop Grumman
George Berg

Alumni E
Red Bilkis

Photon
Jim Dwulit

The League Leader, © 2005, Long Island Industrial Chess League, is published approximately biweekly during the Long Island Industrial Chess League season from October to May each year. The Long Island Industrial Chess League is a non-profit organization founded for the purpose of promoting goodwill and friendship through the game of chess and to conduct tournaments, matches and other forms of chess competition. Neither the LIICL nor its members assume any responsibility for the accuracy of the information contained herein. No reproduction in part nor in full may be made without the expressed written consent of the Board of Directors of the Long Island Industrial Chess League. Requests and inquiries may be made in writing to:

Board of Directors
LIICL
144 Roxbury Avenue
Oakdale, NY 11769

LIICL Directory

September 29, 2004

<u>Name</u>	<u>Function</u>	<u>Telephone</u>	<u>E-mail</u>
Alikakos, George	EDO, Captain President, LIICL	718-836-1250 (H) 631-595-6043 (W)	george.alikakos@DP.ail.com
Berg, George	Northrop Grumman, Captain	516-346-9111 (W) 516-938-5370 (H)	george.berg@ngc.com
Dwulit, Jim	Photon Research Assocs., Captain	631-467-7565 (H) 631-331-6482 (W)	dwulit@photon.com
Red Bilkis	Alumni E, Captain	631-543-7502 (H)	geedad@optonline.net acelaru@veeco.com
Kingsley, John	Alumni C, Captain Treasurer, LIICL	631-563-2108 (H)	JKingsley@msn.com
Ogen, Thomas	Ademco/KSF, Captain	718-446-5443 (H) 516-921-6704 x2880 (W)	Tom_Ogen@ademco.com
Sommese, Tony	Rules Director, LIICL	631-331-6322 (W)	sommese@photon.com
Montenero, Paul	Clear-Cut Computing, Captain		clearcut@mindspring.com
Rizzo, Robert	Editor, League Leader	516-575-2306 (W) 516-378-1342 (H)	robert.rizzo@ngc.com rrizknight@juno.com
Rusch, Ed	Alumni D, Captain	516-735-0417 (H)	
Standing, Robert	LSF, Captain	631-271-6120 (H)	
Huntington Library	Playing Site	631-427-5165	ammurphy@suffolk.lib.ny.us
LIICL	Board of Directors		www.liicl.com

Rules of Conduct for LIICL Match Play

- 1) Games are played under USCF rules unless otherwise stated in the LIICL Constitution.
- 2) Time Control is game/90, with time delay clock it is game/85 +5 sec/move.
- 3) All play will start promptly at 6:50 PM. Any player not appearing by 7:50 PM, forfeits the game.
- 4) A primary Tournament Director (D) will be announced before the onset of play each round. A secondary TD (S) will be announced at that time who will preside over any match that the involves a team which belongs to the same organization as the primary TD.
- 5) Each team is responsible to provide two boards, two sets and two chess clocks.
- 6) All moves must be recorded except if either player has less than five minutes remaining. If moves are not recorded, any claim of repetition is void.
- 7) Clocks must face outward toward the aisle and away from any wall. The TD must have clear visibility. Black has choice of which side he/she wishes to place the clock. Once this is established, then players must rotate the board so as to satisfy the visibility requirement. This may require that not all members of any team will be sitting on the same side of the table.
- 8) Players must sit in order of LIICL rating. If a player is late, the team may postpone assigning players to boards since alternates, if available, must sit in board order. In any case, clocks will start at 6:50 PM. If a board is unfilled and forfeit, this shall not cause the forfeit of any lower board (this is an exception from USCF rules).
- 9) If both opponents are late, the elapsed time should be divided evenly among them upon arrival of the first player.
- 10) If an error was made in setting the clocks or if the clock is not functioning correctly, the time error shall corrected if it can be determined what the correct times should be. If a determination cannot be made, then the elapsed error shall be divided between the players. If this puts a player in severe time trouble or would cause a player to lose on time, then the time will be proportioned at the discretion of the TD.
- 11) To claim a win on time, you must have mating material. Otherwise the game is a draw. According to USCF laws, you must call your opponent's flag. If both flags are down, the game is a draw. Check-mate ends the game but it is always a good idea to stop your clock anyway just to eliminate any arguments.
- 12) With less than five minutes remaining on your clock, you must hit the clock with the same hand which moves the pieces.
- 13) If an illegal move is made, stop the clocks and call the TD. Two minutes will be added to your time if the TD establishes that the opponent has made an illegal move.
- 14) All players must move away from the playing table when their game is concluded. Loud post mortems, kibitzing and any other form of interference are prohibited and can be penalized by the ouster of the guilty party(ies) and/or banishment from the league.
- 15) Table numbers are assigned for each match on the playing schedule.
- 16) Match results, along with names of participants on each board, must be recorded on the results sheet provided and must be submitted to the Rules Director at the end of play.
- 17) A team captain may, without looking at or considering the board position of a game in progress:
 - a) ask a teammate to offer a draw,
 - b) instruct his teammate to accept or refuse a draw offer,or
 - c) tell his teammate the results of any completed games.
- 18) A player may ask his captain if he/she may:
 - a) tender a draw offer,
 - b) accept or reject a draw offer,or
 - c) the score of the match.
- 19) Any conversation among team members not specified in (17) or (18) is illegal.

LIICL 2004-05 Playoff Ratings

<u>by Rating</u>			<u>by Name</u>			<u>by Team</u>		
Rating	Name	Team	Rating	Name	Team	Rating	Name	Team
2142	Berg, George	NGC	1800	Alikakos, George	EDO	1817	Solomon, Steve	ADE
2061	Chipkin, Len	EDO	2142	Berg, George	NGC	1712	Muttreja, Suresh	ADE
1983	Cranston, Tim	PRA	1244	Bilkis, Sy	ALE	1646	Ogen, Tom	ADE
1979	Leone, Dave	LSF	1916	Bonfante, Charles	LSF	1615	Insogna, Matt	ADE
1976	Rizzo, Robert	NGC	1556	Celaru, Adrian	ALE	1476	Solomon, Zack	ADE
1969	Wilkie, Clayton	NGC	2061	Chipkin, Len	EDO	1588	Kingsley, John	ALC
1966	Hodos, Julian	ALE	1983	Cranston, Tim	PRA	1556 /11	Watnick, Mel	ALC
1958	Panico, Nick III	PRA	UNR /2	DePrisco, William	ALD	1506	Goldman, Mel	ALC
1954	Romero, Steve	EDO	1886	Dwulit, James	PRA	1399	Mastandrea, Robe	ALC
1936	Wisbauer, Robert	PRA	1534 /5	Egert, George	NGC	1311	Loshin, Al	ALC
1916	Bonfante, Charles	LSF	1837 /11	Frohreich, Frank	ALD	1837 /11	Frohreich, Frank	ALD
1909	Hom, Dennis	PRA	1506	Goldman, Mel	ALC	1674	Ulfers, Ed	ALD
1886	Dwulit, James	PRA	1485	Goldstein, Carrie	ALE	1603	Shattuck, John	ALD
1837 /11	Frohreich, Frank	ALD	UNR /1	Gray, Glenn	IND	1589	Rusch, Ed	ALD
1817	Solomon, Steve	ADE	1425	Greenwald, Justin	LSF	1054 /9	Zunino, Hugo	ALD
1816	Sommese, Anthon	PRA	1966	Hodos, Julian	ALE	UNR /1	Hoteplopez, Angel	ALD
1800	Alikakos, George	EDO	UNR /1	Hodos, Remir	ALE	UNR /2	DePrisco, William	ALD
1774	Marley, Ken T	NGC	1909	Hom, Dennis	PRA	1966	Hodos, Julian	ALE
1754	Viale, Richard	CCC	UNR /1	Hoteplopez, Angel	ALD	UNR /1	Hodos, Remir	ALE
1723	Standing, Robert	LSF	1615	Insogna, Matt	ADE	1556	Celaru, Adrian	ALE
1712	Muttreja, Suresh	ADE	1588	Kingsley, John	ALC	1485	Goldstein, Carrie	ALE
1707	Kolczynski, Jim	LSF	1707	Kolczynski, Jim	LSF	1453 /7	Thomas, Walter	ALE
1690	Montenero, Paul	CCC	1501 USC	Lamb, Terry	CCC	1244	Bilkis, Sy	ALE
1674	Ulfers, Ed	ALD	1979	Leone, Dave	LSF	1754	Viale, Richard	CCC
1646	Ogen, Tom	ADE	1595	Lichioveri, Domini	EDO	1690	Montenero, Paul	CCC
1618	Spreckles, Charle	EDO	1311	Loshin, Al	ALC	1501 USC	Lamb, Terry	CCC
1615	Insogna, Matt	ADE	1774	Marley, Ken T	NGC	1480	Proffman, Paul	CCC
1603	Shattuck, John	ALD	1399	Mastandrea, Robe	ALC	1427	Warnock, Andy	CCC
1595	Lichioveri, Domini	EDO	1690	Montenero, Paul	CCC	1111 /6	Montenero, Paul R	CCC
1589	Rusch, Ed	ALD	1111 /6	Montenero, Paul R	CCC	2061	Chipkin, Len	EDO
1588	Kingsley, John	ALC	1712	Muttreja, Suresh	ADE	1954	Romero, Steve	EDO
1556 /11	Watnick, Mel	ALC	1646	Ogen, Tom	ADE	1800	Alikakos, George	EDO
1556	Celaru, Adrian	ALE	1958	Panico, Nick III	PRA	1618	Spreckles, Charle	EDO
1534 /5	Egert, George	NGC	1480	Proffman, Paul	CCC	1595	Lichioveri, Domini	EDO
1506	Goldman, Mel	ALC	1976	Rizzo, Robert	NGC	UNR /1	Gray, Glenn	IND
1501 USC	Lamb, Terry	CCC	1954	Romero, Steve	EDO	1979	Leone, Dave	LSF
1485	Goldstein, Carrie	ALE	1589	Rusch, Ed	ALD	1916	Bonfante, Charles	LSF
1480	Proffman, Paul	CCC	1603	Shattuck, John	ALD	1723	Standing, Robert	LSF
1476	Solomon, Zack	ADE	1817	Solomon, Steve	ADE	1707	Kolczynski, Jim	LSF
1453 /7	Thomas, Walter	ALE	1476	Solomon, Zack	ADE	1425	Greenwald, Justin	LSF
1427	Warnock, Andy	CCC	1816	Sommese, Anthon	PRA	2142	Berg, George	NGC
1425	Greenwald, Justin	LSF	1618	Spreckles, Charle	EDO	1976	Rizzo, Robert	NGC
1399	Mastandrea, Robe	ALC	1723	Standing, Robert	LSF	1969	Wilkie, Clayton	NGC
1311	Loshin, Al	ALC	1453 /7	Thomas, Walter	ALE	1774	Marley, Ken T	NGC
1244	Bilkis, Sy	ALE	1674	Ulfers, Ed	ALD	1534 /5	Egert, George	NGC
1111 /6	Montenero, Paul R	CCC	1754	Viale, Richard	CCC	1983	Cranston, Tim	PRA
1054 /9	Zunino, Hugo	ALD	1427	Warnock, Andy	CCC	1958	Panico, Nick III	PRA
UNR /1	Hoteplopez, Angel	ALD	1556 /11	Watnick, Mel	ALC	1936	Wisbauer, Robert	PRA
UNR /1	Hodos, Remir	ALE	1969	Wilkie, Clayton	NGC	1909	Hom, Dennis	PRA
UNR /1	Gray, Glenn	IND	1936	Wisbauer, Robert	PRA	1886	Dwulit, James	PRA
UNR /2	DePrisco, William	ALD	1054 /9	Zunino, Hugo	ALD	1816	Sommese, Anthon	PRA

2004-2005 LIICL Playoff Tie-Break Chart

	PRA	NGC	LSF	EDO	CCC	ALE	ALD	ALC
ADE	PRA 1-0-0	NGC 1-0-0	LSF 1-0-0	EDO 2-0-0	ADE 1-0-0	ADE 2-0-0	ADE 1-0-0	ADE 1-0-0
ALC	PRA 1-0-0	NGC 1-0-0	LSF 1-0-0	EDO 1-0-0	CCC 1-0-1	ALE 1-0-0	ALD 2-0-0	
ALD	PRA 1-0-0	NGC 1-0-0	LSF 1-0-0	EDO 1-0-0	CCC 1-0-1	ALE 1-0-0		
ALE	PRA 1-0-0	NGC 1-0-0	LSF 1-0-1	EDO 1-0-0	CCC 0-0-1 104 - 100			
CCC	PRA 1-0-0	NGC 1-0-0	LSF 1-0-0	EDO 1-0-0				
EDO	PRA 1-0-0	NGC 2-0-0	EDO 1-0-0					
LSF	PRA 2-0-0	NGC 1-0-0						
NGC	NGC 1-1-0 168 - 155							

Notes:

For each possible match-up, the team with the Tie-Break odds is shown in the box
 Head-to-head Match scores are shown if one team won the season series
 If the season series Match scores are identical then LIICL Points are shown.

Rodriguez is Featured in CL

(continued from page 1)

The bold move was **25.Nc5!** which both holds the e4 square and also blocks the black queen from the c8 square. The finish was as follows: **25 . . . dc5, 26.Qf5 Bf6, 27.Rg1 Qd4, 28.Bf6 Qg1, 29.Kg1 Rfb8, 30.Qg5 Kf8, 31.Qe5 Rb7, 32.Be7 Ke8, 33.Bg5 Kd7, 34.Qd5 Kc7, 35.Bf4 Kc8, 36.Qc6 1-0**

Keith's outstanding recent results have led to a number of invitations. He is representing the US in the strong Rochade International Team tournament and was nominated into the semifinals of the World Correspondence Chess Championship cycle. We would not be surprised if Keith follows in the footsteps of Hans Berliner and Vytas Palciauskas as the third World Correspondence Champion from the USA. Congrats Keith and good chess!



International Correspondence Chess Federation IM Keith Rodriguez

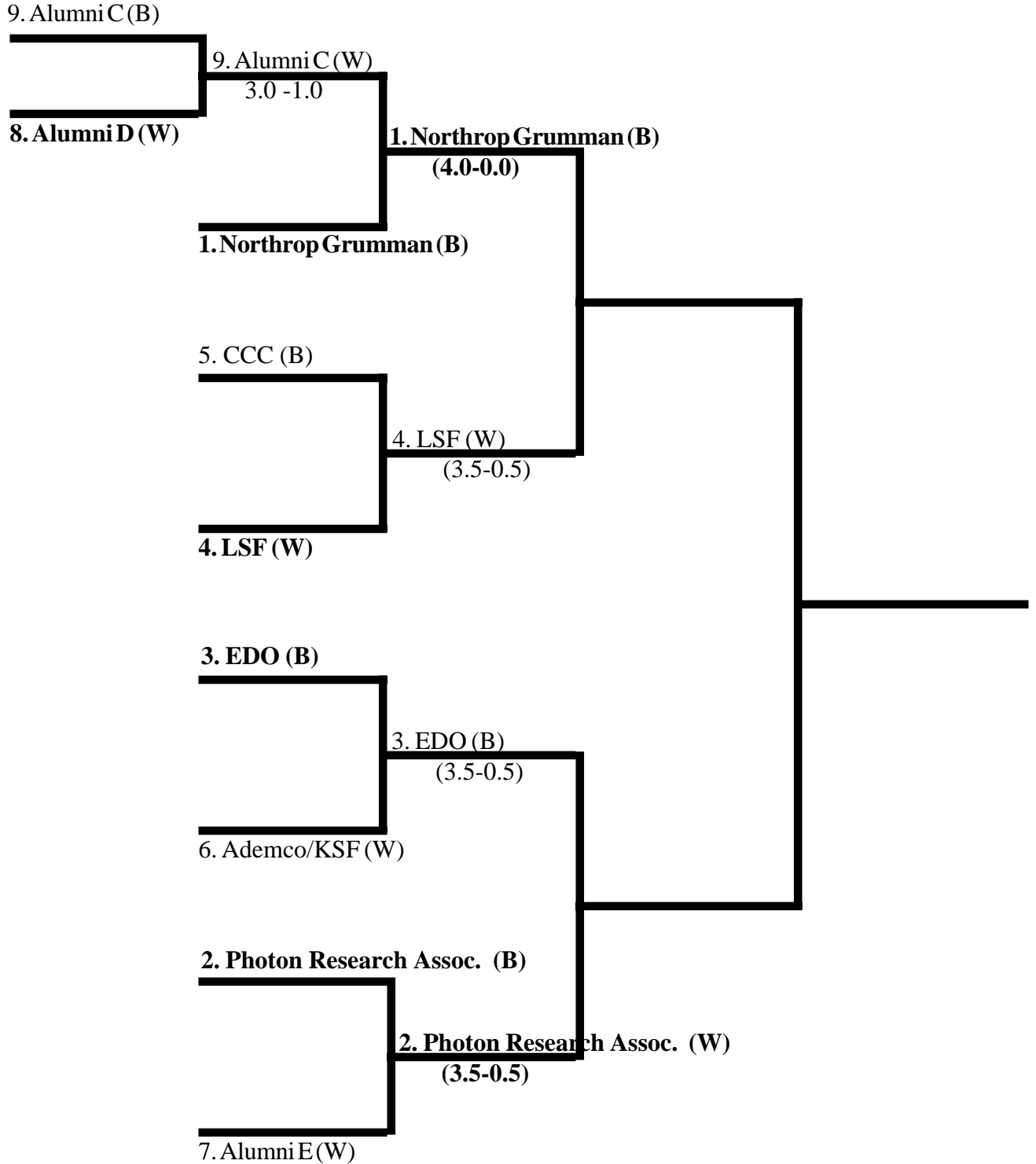
2004-2005 LIICL Playoff Brackets

Round 1
Mar. 18

Round 2
Apr. 01

Round 3
Apr. 15

Round 4
Apr. 22



Note: Team with tie-break odds in **Bold**

