



The League Leader

The Official Newsletter of the Long Island Industrial Chess League

Volume XVI, Number 3

www.liicl.com

October 7, 2005

Quest for a Perfect Season

Team Results - Round 2

September 23, 2005

LSF -----	LIRR -----	CCC -----	Alumni C -----
Standing R 0.0 1.0	Pappaceno M	Viale R 1.0 0.0	Kingsley J
Kolczynski J 0.0 1.0	Panico N III	Lamb T 1.0 0.0	Goldman M
Greenwald J 0.0 1.0	Panico D	Montenero P 1.0 0.0	Watnick M
Caracciolo J 0.0 1.0	Johnson W	Cretaro A 0.0 1.0	Mastandrea R
	0.0 4.0		3.0 1.0
Alumni E -----	Alumni D -----	Honeywell/KSF -----	EDO -----
Hodos J 1.0 0.0	Frohreich F	Solomon S 0.5 0.5	Chipkin L
Celaru A 1.0 0.0	Forfeit	Muttreja S 0.0 1.0	Romero S
Goldstein C 0.0 1.0	Rusch E	Ogen T 0.0 1.0	Alikakos G
Thomas W 0.0 1.0	Zunino H	Insogna M 1.0 0.0	Spreckles C
	2.0 2.0		1.5 2.5
NGC -----	PRA -----	Unscheduled, Rated	
Berg G 0.5 0.5	Wisbauer R	White	Black
Wilkie C 0.0 1.0	Hom D	-----	-----
Rizzo R 0.0 1.0	Dwulit J	Loshin A 0.0 1.0	Wu D
Marley K 1.0 0.0	Sommese A		
	1.5 2.5		

LIRR Takes Clear Lead

It has never happened but might this be the year? LIRR is a perfect 8-0-0 after 2 rounds and leads second place CCC by a full game or 4 LIICL points. Could this be the year that all individuals on a team go unbeaten and untied? Though it is a long shot, they are now one-sixth of the way toward that possibility. Of course the tough part is that there remain three position rounds which will pit the top teams vs. the second place team 3 times. So any team to perform such a feat would really have to earn it.

Meanwhile CCC is the surprise team of the young season. They are in second place yet they are rated almost 400 points on average below LIRR. They have a huge lead already on the second place Under 1800 team, LSF.

Dues Deadline is October 21

All team captains are reminded that their \$120 team dues for the current season are payable on or before October 21.

In This Issue

Team Results - Round 2	1
LIRR Takes Clear Lead	1
Dues Deadline is October 21	1
2005-06 LIICL Team Standings	1
Individual Class Standings	2
LIICL Directory	3
Zwischenzug with Jimocz	4
LIICL 2005-06 Preseason Ratings	5
LIICL Schedule Rev. A	6

2005-2006 LIICL Regular Season Team Standings

Team	Team Rating	LIICL Pts	Games			Match					
			W	L	D	Pts	W	L	D	Pts	F
LIRR	2044	40	8	0	0	8.0	2	0	0	2.0	0
CCC	1659	36	7	1	0	7.0	2	0	0	2.0	0
PRA	1925	30	5	2	1	5.5	2	0	0	2.0	0
NGC	1985	30	5	2	1	5.5	1	1	0	1.0	0
EDO	1848	22	3	4	1	3.5	1	1	0	1.0	0
LSF	1703	22	3	4	1	3.5	1	1	0	1.0	0
Alumni E	1601	16	2	6	0	2.0	0	1	1	0.5	0
Honeywell/KSF	1692	16	1	5	2	2.0	0	2	0	0.0	0
Alumni D	1505	15	2	6	0	2.0	0	1	1	0.5	1
Alumni C	1517	12	1	7	0	1.0	0	2	0	0.0	0

LIICL 2005-2006 Individual Class Standings

Rating	Name	Team	PPR	G	W	L	D
Class A							
2105 /12	Pappaceno, Mike	LIR	5.00	2	2	0	0
1980	Panico, Nick III	LIR	5.00	2	2	0	0
1911	Johnson, Willie	LIR	5.00	2	2	0	0
1900	Hom, Dennis	PRA	5.00	2	2	0	0
2160	Berg, George	NGC	4.00	2	1	0	1
2060	Chipkin, Len	EDO	4.00	2	1	0	1
1927	Wisbauer, Robert	PRA	4.00	2	1	0	1
2165 USCF	Critelli, James	LIR	3.00	1	1	0	0
1981	Rizzo, Robert	NGC	3.00	2	1	1	0
1967	Hodos, Julian	ALE	3.00	2	1	1	0
1924	Panico, Danny	LIR	3.00	1	1	0	0
1913	Romero, Steve	EDO	3.00	1	1	0	0
1909	Bonfante, Charles	LSF	3.00	1	1	0	0
1982	Wilkie, Clayton	NGC	1.00	1	0	1	0
1981	Cranston, Tim	PRA	1.00	1	0	1	0
Class B							
1890	Dwulit, James	PRA	5.00	2	2	0	0
1817	Marley, Ken T	NGC	5.00	2	2	0	0
1762	Viale, Richard	CCC	5.00	2	2	0	0
1719 /6	Lamb, Terry	CCC	5.00	2	2	0	0
1803	Alikakos, George	EDO	3.00	2	1	1	0
1724	Kolczynski, Jim	LSF	3.00	2	1	1	0
1817	Solomon, Steve	HON	2.00	2	0	1	1
1755	Standing, Robert	LSF	2.00	2	0	1	1
1790	Frohreich, Frank	ALD	1.00	2	0	2	0
1788	Sommese, Anthon	PRA	1.00	1	0	1	0
Class C							
1678	Montenero, Paul	CCC	5.00	2	2	0	0
1619	Insogna, Matt	HON	3.00	2	1	1	0
1571	Rusch, Ed	ALD	3.00	2	1	1	0
1559	Celaru, Adrian	ALE	3.00	2	1	1	0
1534 /5	Egert, George	NGC	3.00	1	1	0	0
1691	Muttreja, Suresh	HON	2.00	2	0	1	1
1678	Wu, Danny	NGC	1.00	0	0	0	0
1649	Kingsley, John	ALC	1.00	2	0	2	0
1642	Ogen, Tom	HON	1.00	2	0	2	0
1617	Cecchini, Richard	EDO	1.00	1	0	1	0
1614	Spreckles, Charle	EDO	1.00	2	0	2	0
1586	Shattuck, John	ALD	1.00	1	0	1	0
1552	Goldman, Mel	ALC	1.00	2	0	2	0
1500	Watnick, Mel	ALC	1.00	2	0	2	0
Class D							
1478	Proffman, Paul	CCC	3.00	1	1	0	0
1425	Greenwald, Justin	LSF	3.00	2	1	1	0
1367	Mastandrea, Robe	ALC	3.00	1	1	0	0
1072 /12	Zunino, Hugo	ALD	3.00	2	1	1	0
1486	Goldstein, Carrie	ALE	1.00	2	0	2	0
1420 EST	Caracciolo J	LSF	1.00	1	0	1	0
1392 /9	Thomas, Walter	ALE	1.00	2	0	2	0
1334	Loshin, Al	ALC	1.00	1	0	1	0
1154	Cretaro, Tony	CCC	1.00	1	0	1	0

The League Leader

www.liicl.com

Editor-in-Chief
Robert Rizzo

Copy Editor
Clayton Wilkie

Photography
Kathy Dwulit
Kevin Mahoney

Board of Directors

President
George Alikakos

Treasurer
John Kingsley

Rules Director
Tony Sommese

Executive Board

Honeywell/KSF
Tom Ogen

EDO
George Alikakos

Alumni C
John Kingsley

Clear-Cut
Paul Montenero

Alumni D
Ed Rusch

Life Service Foundation
Robert Standing

Northrop Grumman
George Berg

Alumni E
Adrian Celaru

Photon
Jim Dwulit

LIRR
Nick Panico III

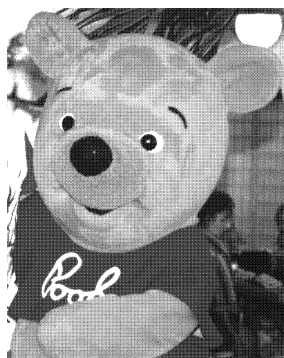
The League Leader, © 2005, Long Island Industrial Chess League, is published approximately biweekly during the Long Island Industrial Chess League season from October to May each year. The Long Island Industrial Chess League is a non-profit organization founded for the purpose of promoting goodwill and friendship through the game of chess and to conduct tournaments, matches and other forms of chess competition. Neither the LIICL nor its members assume any responsibility for the accuracy of the information contained herein. No reproduction in part nor in full may be made without the expressed written consent of the Board of Directors of the Long Island Industrial Chess League. Requests and inquiries may be made in writing to:

Board of Directors
LIICL
144 Roxbury Avenue
Oakdale, NY 11769

LIICL Directory

October 7, 2005

<u>Name</u>	<u>Function</u>	<u>Telephone</u>	<u>E-mail</u>
Alikakos, George	EDO, Captain President, LIICL	718-836-1250 (H) 631-630-5343 (W)	george.alikakos@DP.ail.com
Berg, George	Northrop Grumman, Captain	516-346-9111 (W) 516-938-5370 (H)	george.berg@ngc.com
Dwulit, Jim	Photon Research Assocs., Captain	631-467-7565 (H) 631-331-6482 (W)	dwulit@photon.com
Adrian Celaru	Alumni E, Captain		acelaru@veeco.com
Kingsley, John	Alumni C, Captain Treasurer, LIICL	631-563-2108 (H)	JKingsley@msn.com
Ogen, Thomas	Honeywell/KSF, Captain	718-446-5443 (H) 516-921-6704 x2880 (W)	Tom_Ogen@ademco.com
Sommese, Tony	Rules Director, LIICL	631-331-6322 (W)	sommese@photon.com
Montenero, Paul	Clear-Cut Computing, Captain	516-845-4081 (W)	clearcut@mindspring.com
Rizzo, Robert	Editor, League Leader	516-575-2306 (W) 516-378-1342 (H)	robert.rizzo@ngc.com rrizknight@juno.com
Rusch, Ed	Alumni D, Captain	516-735-0417 (H)	
Standing, Robert	LSF, Captain	631-271-6120 (H) 631-697-9846 (C)	
Huntington Library	Playing Site	631-427-5165	ammurphy@suffolk.lib.ny.us
LIICL	Board of Directors		www.liicl.com



Zwischenzug with Jimocz

What is going on in the World Championships? Most of the top-10 players on the FIDE list are playing for the World Championship (a double round robin). The players are Topalov, Anand, Polgar, Svidler, Morozevich, Leko, Adams, and Kasimdzhanov. What is amazing is as of this writing we are seeing the making of a legendary performance. Veselin Topalov has scored a whopping 6.5/7.0 in the first half of the tournament! He came close to perfection since he was up two pawns in a 97 move draw against Anand but couldn't avoid a perpetual check. He is playing at a 3158 performance! If he continues at this clip he will surpass the legendary performance of Fischer during the 1972 candidates matches. These players are 2700s! They are not patzers. I am very impressed up to this point with the future World Champion. Kramnik has to be taking notes – he had trouble with Leko!

In the league an interesting ruling took place in round 2. Players sat down against the wrong opponents in their match and started playing. The players just assumed they were playing the correct opponent for their board position. Suddenly someone noticed the error. What to do? The hard noses said, "Double Forfeit" while the wimps said, "Just continue as they are". It took the Solomon wisdom of Rules Director Tony Sommese to defuse a tense situation. Tony had them restart the games with the correct opponents but to remove the elapsed time from the clocks, splitting the difference among the players. Way to go Tony!

Rizzo-Dwulit played an interesting Exchange Variation of the Ruy Lopez. It ran into an endgame that appeared equal until Dwulit allowed a slight edge for White. However white refused to take the edge and instead blundered a piece for the loss. A tough way to lose (as if any way is pleasant!).

The position of interest is shown in figure 1.

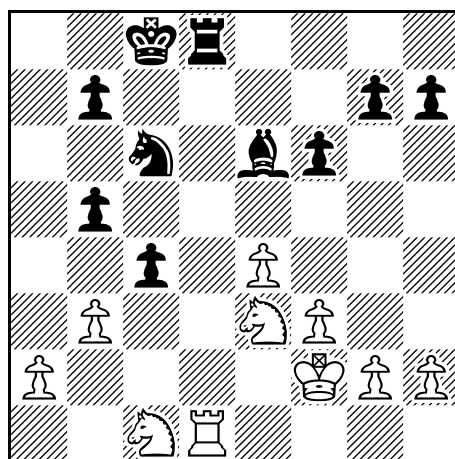


Figure 1 Position after 24. Kf2

White has just played 24. Kf2, and Black should take the rook followed by centralizing his King for a very even game. Instead Black played 24... Nb4 play followed 25. Rxd8 Kxd8 which Fritz evaluates as a +/-, a slight edge for White. Then white plays a blunder 26. a3 (figure 2)

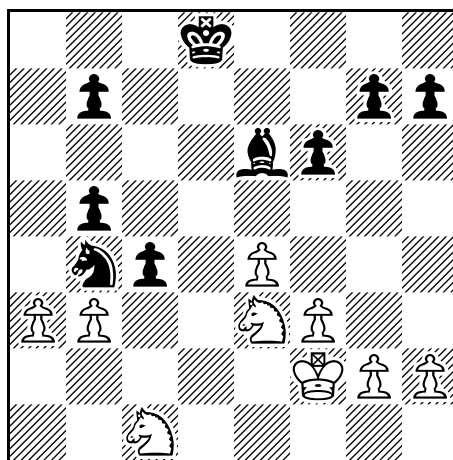


Figure 2 White just played 26.a3

Here Black simply snatches the free pawn with 26... cxb3. Black cannot take the knight since the b pawn will queen and he cannot take the pawn on b3 since Black's knight is freed with a check while white's remains en prise. Fritz recommends 27. Nd1 to stop the

pawns advance. Unfortunately, Rizzo played 27. Nxb3 thinking he could still get the knight after 27... Nd3+ by playing 28. Ke2. The knight escapes with a second check at f4 and the b-knight is lost.

The game with Fritz's analysis is shown in figure 3.

I am looking forward to the next 7 rounds of the World Championship just to see how the Topalov story turns out – legendary or let-down! Watch them live on the Internet at Chessbase, ICC, or the World championship site. But be aware each is a premium service (chessbase's come free if you own Fritz 8 or higher). You can get reports of the games on www.chessbase.com or TWIC's homepage.

Until next time, tell 'em Jimocz sent you!

Rizzo, Robert (1981)
Dwulit, James (1890)
[C68]
LIICL 2005-2006
NGC vs. PRA
23.09.2005
[Deep Fritz 7 (9s)]

C68 Ruy Lopez Exchange Variation, sidelines
1.e4 e5 2.Nf3 Nc6 3.Bb5 a6 4.Bxc6 dxc6 5.d4 exd4 6.Qxd4 Bg4 last book move **7.0-0 Qxd4** [7... Bxf3 8.Qxd8 Rxd8 9.gxf3 =/+]
8.Nxd4 0-0 9.c3 Prevents intrusion on b4 **Bc5** [9... c5 10.Nb3 =/+]
10.Be3 Bb6 11.f3 Bd7 12.Na3 f6 Controls g5 [12... Ne7 13.Nc4 =]
13.Nac2 [13.Rfe1 h5 =/+]
Ne7 = 14.Nb3 Be6 15.Rad1 Ng6 16.Nc1 Ne5 17.Bxb6 cxb6 18.b3 Covers c4 **c5 19.c4 b5 20.cxb5 axb5 21.Ne3 c4** This push gains space **22.Rxd8+** [22.Nc2 Nc6 =]
22... Rxd8 23.Rd1 Nc6 24.Kf2 Nb4 [24... Rxd1!? 25.Nxd1 Kd7 =]
25.Rxd8+ Kxd8 26.a3 [better is 26.Ke1!? = is a viable option]
26... cxb3 -/+ 27.Nxb3? [better is 27.Nd1 Nc2 28.Nd3 -/+]
27... Nd3+ 28.Ke2 Nf4+ 29.Kd2 Bxb3 [29... Bxb3 30.g3 Ne6 -/+]
0-1

Figure 3 Game Score with Fritz commentary

LIICL 2005-2006 Pre-Season Ratings

		by Name	by Rating	
Rating		Name	Rating	Name
1803		Alikakos, George	2160	Berg, George
UNR /1		Ben-Ami, Victor	2060	Chipkin, Len
2160		Berg, George	1982	Wilkie, Clayton
UNR /1		Bhattacharya,	1981	Rizzo, Robert
1234		Bilkis, Sy	1981	Cranston, Tim
1909		Bonfante, Charles	1980	Leone, Dave
1559		Celaru, Adrian	1980	Panico, Nick III
2060		Chipkin, Len	1967	Hodos, Julian
1981		Cranston, Tim	1927	Wisbauer, Robert
UNR /3		DePrisco, William	1913	Romero, Steve
1890		Dwulit, James	1909	Bonfante, Charles
1534 /5		Egert, George	1900	Hom, Dennis
1790		Frohreich, Frank	1890	Dwulit, James
1552		Goldman, Mel	1849	Turiy, Kolman
1486		Goldstein, Carrie	1817	Marley, Ken T
UNR /1		Gray, Glenn	1817	Solomon, Steve
1425		Greenwald, Justin	1803	Alikakos, George
1967		Hodos, Julian	1790	Frohreich, Frank
UNR /1		Hodos, Remir	1788	Sommese, Anthony
1900		Hom, Dennis	1762	Viale, Richard
UNR /1		Hoteplopez, Angel	1755	Standing, Robert
1619		Insogna, Matt	1724	Kolczynski, Jim
1649		Kingsley, John	1719 /6	Lamb, Terry
1724		Kolczynski, Jim	1691	Muttreja, Suresh
1719 /6		Lamb, Terry	1678	Montenero, Paul
1980		Leone, Dave	1674	Ulfers, Ed
1595		Lichioveri, Domini	1649	Kingsley, John
1334		Loshin, Al	1642	Ogen, Tom
UNR /2		Lustig, Darren	1619	Insogna, Matt
1817		Marley, Ken T	1614	Spreckles, Charles
1367		Mastandrea, Robe	1595	Lichioveri, Dominick
1678		Montenero, Paul	1586	Shattuck, John
1111 /6		Montenero, Paul R	1571	Rusch, Ed
1691		Muttreja, Suresh	1559	Celaru, Adrian
1642		Ogen, Tom	1552	Goldman, Mel
1980		Panico, Nick III	1534 /5	Egert, George
1478		Proffman, Paul	1500	Watnick, Mel
1981		Rizzo, Robert	1486	Goldstein, Carrie
1913		Romero, Steve	1478	Proffman, Paul
1571		Rusch, Ed	1476	Solomon, Zack
1586		Shattuck, John	1427	Warnock, Andy
1817		Solomon, Steve	1425	Greenwald, Justin
1476		Solomon, Zack	1392 /9	Thomas, Walter
1788		Sommese, Anthon	1367	Mastandrea, Robert
UNR /3		Soto, Jorge	1334	Loshin, Al
1614		Spreckles, Charle	1234	Bilkis, Sy
1755		Standing, Robert	1111 /6	Montenero, Paul R.
1392 /9		Thomas, Walter	1072 /12	Zunino, Hugo
1849		Turiy, Kolman	UNR /3	DePrisco, William
1674		Ulfers, Ed	UNR /1	Hodos, Remir
1762		Viale, Richard	UNR /1	Hoteplopez, Angel
1427		Warnock, Andy	UNR /3	Soto, Jorge
1500		Watnick, Mel	UNR /2	Lustig, Darren
1982		Wilkie, Clayton	UNR /1	Ben-Ami, Victor
1927		Wisbauer, Robert	UNR /1	Bhattacharya, Sankar
1072 /12		Zunino, Hugo	UNR /1	Gray, Glenn

2005-2006 LIICL Regular Season Schedule, Rev. A September 8, 2005

Starting time for the regular season is 6:50 PM. Time control is game/90 or game/85 + 5 sec/move.

Round	1	2	3	4	5	6	7	8	9	10	11	12
Date	09-Sep	23-Sep	07-Oct	21-Oct	04-Nov	18-Nov	02-Dec	16-Dec	TBD	TBD	TBD	TBD
Location	LIB	LIB	LIB	LIB	LIB	LIB	LIB	LIB	TBD	TBD	TBD	TBD
1LSF	A W	2 W	3 B	4 W	TDB	5 B D	6 W C	7 B	TDB	8 W	9 B	TDB
2LIRR	9 W S	1 B	A W	3 W	TDB	2 B	5 W D	6 B C	TDB	7 W	8 B	TDB
3Alumni D	8 W	9 B S	1 W	2 B	TDB	A W	4 W	5 B D	TDB	6 W C	7 B	TDB
4Alumni C	7 W	8 B	9 W S	1 B	TDB	4 W	3 B	A W	TDB	5 W D	6 B C	TDB
5PRA	6 W	7 B	8 W	9 B S	TDB	1 W	2 B	3 W	TDB	4 B	A W D	TDB
6EDO	5 B C	A B	7 W	8 B	TDB	9 W S	1 B	2 W	TDB	3 B	4 W	TDB
7NGC	4 B D	5 W C	6 B	A B	TDB	8 W	9 B S	1 W	TDB	2 B	3 W	TDB
8CCC	3 B	4 W D	5 B C	6 W	TDB	7 B	A B	9 W S	TDB	1 B	2 W	TDB
9Alumni E	2 B	3 W	4 B D	5 W C	TDB	6 B	7 W	8 B	TDB	A B S	1 W	TDB
A Honeywell/KS	1 B	6 W	2 B	7 W D	TDB	3 B C	8 W	4 B	TDB	9 W	5 B S	TDB

Explanation: Rounds 5, 9 & 12 are position rounds. Opponents will be determined based upon standings.
 Pairings for Position Rounds are: First vs. Second, Third vs. Fourth, Fifth vs. Sixth, Seventh vs. Eighth and Ninth vs. Tenth
 Pairings for Round 1 of the Playoffs: Seventh vs. Tenth and Eighth vs. Ninth, First through Sixth have Byes

Starting time for the playoffs is 6:50 PM. Time control is game/90 or game/85 + 5 sec/move.

Playoffs: Round 1: (TDB) TDB Quarters: (TBD) TDB Semis: (TBD) TDB Finals: (TBD) TDB Individual/Final: (TBD) TDB

Events: Charity Blitz: (TBD) TDB GM Simul: (TBD) TDB Awards Evening: (TBD) TDB

Key: D = Director UMC= United Methodist Church W= White on Board 1
 S = Secondary Director CCH= The Congregational Church of Huntington B= Black on Board 1
 C = Coffee Duty LIB= Huntington Library TBD= To Be Determined