



The League Leader

The Official Newsletter of the Long Island Industrial Chess League

Volume XVI, Number 15

www.liicl.com

March 31, 2006

C...C...C...inderella!

CCC Clinches U/1800 Title

With their mantra, "Hooray for us we won!" silently intoned upstart Clear-Cut Computing has qualified for the LIICL semifinals for the first time. They did it with a 3.5-0.5 win over LSF. In doing so, CCC has clinched the Under/1800 Title this season as they are the only team in that category to reach the semis. Honeywell/KSF captured the Second Under/1800 trophy based upon the fact that they were the highest seeded Under/1800 team to get eliminated in the Quarterfinals.

But the Cinderella story is not over for CCC as they have their eye on the big prize. They are only 2 match wins away from the LIICL overall title. To do so they must beat regular season champion, Long Island RailRoad. In the other semifinal Photon Research Associates will go up against the defending LIICL champs, Northrop Grumman. In those matches PRA and LIRR enjoy tie-break odds.

The CCC team has borrowed their inspired theme from Paul Ragonnet. "Rags" would write those 5 words on his scoresheet

whenever the team won a match. Paul was the LIICL Rules Director when he passed away much too young an age. CCC has dedicated this season's success to Paul's memory.

The following is a game from the regular season match between CCC and PRA.:

White: Lamb, Terry (CCC)
Black: Wisbauer, Robert (PRA)

Board 1
ECO Code: B01
Place: LIICL
Date: 2006

1.e4 d5 2.exd5 Qxd5 3.Nc3 Qa5 4.d4 c6 5.Nf3 Nf6 6.Bd2 Qc7 7.Be2 Bf5 8.0-0 e6 9.Ne5 Bd6 10.f4 h6 11.Be3 Nbd7 12.a4 0-0 13.g4 Bh7 14.Bf3 Bxe5 15.dxe5 Nd5 16.Nxd5 cxd5 17.c3 Nc5 18.Bxc5 Qxc5+ 19.Qd4 Rfc8 20.f5?!
The first critical position, f5 is probably unsound. If Wisbauer plays exf right away he is probably winning. The move was an attempt to limit the scope of the Bishop on h7 which is already cramped. 20...Qxd4+ 21.cxd4 Rc4 22.Rfd1 Rac8 23.Rd2 Rb4 24.Ra3 Rcc4 25.a5

exf5?! This would have been okay on move 20 but here it activates White's light square Bishop 26.Bxd5 Rxd4 27.Rxd4 Rxd4 28.Rc3! The second critical position. 28...Rd5 is off-limits for Black as 29.Rc8+ Rd8 30.Rd8+ is mate. The Bishop on h7 is truly misplaced and actually blocks the Black King's escape route. 28...Rxc4+? Almost any other move is winning for Black, i.e., Bg6 opening an escape square for the King and the Bishop on d5 is en prise. The point is that after the seemingly innocuous 29. Kf2, the Rook on g4 can't return to d4 because Black suffers the same back rank mate in 2 as above. Thus by his 28th move, Black's Rook has lost contact with the d5 Bishop and invited the ensuing combination (continued on page 8)

Submit Your Games

To capture a Best Game or Best Combination award, you must submit the game score. To date we have very few games to select from. Submit those games and capture a Ronnie!

In This Issue

| | |
|--------------------------------------|----|
| CCC Clinches U/1800 Title..... | 1 |
| Submit Your Games..... | 1 |
| 2005-06 LIICL Team Standings..... | 1 |
| Individual Swiss Standings..... | 2 |
| LIICL Directory..... | 3 |
| LIICL Quiz 2006..... | 4 |
| Team Results - Round P2 & I2..... | 4 |
| Quiz Question #10..... | 5 |
| LIICL Match Play Rules of Conduct... | 6 |
| LIICL Playoff Ratings..... | 7 |
| LIICL Tie-Break Chart..... | 8 |
| LIICL Playoff Brackets..... | 9 |
| LIICL Schedule Rev. G..... | 10 |

Final 2005-2006 LIICL Regular Season Team Standings

| Team | Team LIICL | | | —Games— | | | | —Match— | | | | F |
|--------------|------------|-----|--------|---------|----|----|------|---------|----|---|------|---|
| | Rating | Pts | TB's | W | L | D | Pts | W | L | D | Pts | |
| LIRR | 2199 | 202 | 222.50 | 33 | 4 | 11 | 38.5 | 9 | 1 | 2 | 10.0 | 0 |
| NGC | 2015 | 174 | 186.00 | 25 | 10 | 13 | 31.5 | 7 | 3 | 2 | 8.0 | 0 |
| EDO | 1848 | 162 | 165.25 | 25 | 15 | 8 | 29.0 | 6 | 2 | 4 | 8.0 | 2 |
| LSF | 1861 | 156 | 140.25 | 24 | 18 | 6 | 27.0 | 6 | 4 | 2 | 7.0 | 0 |
| CCC | 1715 | 150 | 133.75 | 25 | 21 | 2 | 26.0 | 6 | 3 | 3 | 7.5 | 2 |
| PRA | 1925 | 146 | 144.25 | 24 | 19 | 5 | 26.5 | 7 | 4 | 1 | 7.5 | 8 |
| Honeywell/KS | 1692 | 130 | 74.00 | 18 | 23 | 7 | 21.5 | 5 | 6 | 1 | 5.5 | 4 |
| Alumni D | 1655 | 105 | 38.75 | 14 | 32 | 2 | 15.0 | 2 | 7 | 3 | 3.5 | 3 |
| Alumni E | 1601 | 100 | 51.25 | 11 | 31 | 6 | 14.0 | 2 | 9 | 1 | 2.5 | 4 |
| Alumni C | 1517 | 88 | 48.50 | 9 | 37 | 2 | 10.0 | 0 | 11 | 1 | 0.5 | 0 |

2006 LIICL Individual Swiss — Round 2

| # | Name | Rtng | Team | Rd 1 | Rd 2 | Total | TB[S] | TB[C] | TB[O] |
|----|--------------------|------|------|------|------|-------|-------|-------|-------|
| 1 | Clayton Wilkie | 1978 | NGC | W25 | W21 | 2.0 | 2.0 | 3.0 | 3.0 |
| 2 | George Berg | 2162 | NGC | W50 | W20 | 2.0 | 1.5 | 3.0 | 2.5 |
| 3 | Steve Romero | 1934 | EDO | W53 | W23 | 2.0 | 1.5 | 3.0 | 2.5 |
| 4 | Nick III Panico | 2000 | LIR | W59 | W26 | 2.0 | 0.5 | 3.0 | 1.0 |
| 5 | Kolman Turiy | 1849 | IND | W49 | D7 | 1.5 | 2.0 | 2.5 | 3.0 |
| 6 | Matt Insogna | 1600 | HON | W30 | D28 | 1.5 | 2.0 | 2.5 | 2.5 |
| 7 | John Shattuck | 1556 | ALD | W63 | D5 | 1.5 | 1.5 | 2.5 | 2.5 |
| 8 | Robert Rizzo | 1951 | NGC | D52 | W27 | 1.5 | 1.5 | 2.0 | 3.0 |
| 9 | Tim Cranston | 1969 | PRA | H— | W22 | 1.5 | 1.0 | 2.0 | 2.0 |
| 10 | Willie Johnson | 1941 | LIR | H— | W24 | 1.5 | 1.0 | 2.0 | 2.0 |
| 11 | Terry Lamb | 1888 | CCC | W61 | D49 | 1.5 | 0.5 | 2.5 | 0.5 |
| 12 | Mike Pappaceno | 2111 | LIR | H— | W51 | 1.5 | 0.5 | 2.0 | 1.0 |
| 13 | Jeremy Mandelkern | 1930 | IND | H— | W55 | 1.5 | 0.5 | 2.0 | 1.0 |
| 14 | Frank Paciulli | 1844 | LIR | H— | W54 | 1.5 | 0.5 | 2.0 | 1.0 |
| 15 | Tony Sommese | 1805 | PRA | W60 | H— | 1.5 | 0.0 | 2.5 | 0.0 |
| 16 | Rich Viale | 1843 | CCC | H— | W60 | 1.5 | 0.0 | 2.0 | 0.0 |
| 17 | Mike Dorsky | 1842 | CCC | H— | W59 | 1.5 | 0.0 | 2.0 | 0.0 |
| 18 | Darren Lustig | 1671 | IND | H— | W62 | 1.5 | 0.0 | 2.0 | 0.0 |
| 19 | Hugo Zunino | 1202 | ALD | H— | W61 | 1.5 | 0.0 | 2.0 | 0.0 |
| 20 | Steve Solomon | 1827 | HON | W58 | L2 | 1.0 | 2.5 | 2.0 | 3.5 |
| 21 | Suresh Muttreja | 1736 | HON | W56 | L1 | 1.0 | 2.5 | 2.0 | 3.5 |
| 22 | Len Chipkin | 2073 | EDO | W29 | L9 | 1.0 | 2.5 | 2.0 | 3.0 |
| 23 | Jim Dwulit | 1935 | PRA | W64 | L3 | 1.0 | 2.0 | 2.0 | 3.0 |
| 24 | Ed Rusch | 1599 | ALD | W57 | L10 | 1.0 | 2.0 | 2.0 | 2.5 |
| 25 | Paul Montenero | 1714 | CCC | L1 | W64 | 1.0 | 2.0 | 1.0 | 3.0 |
| 26 | Ed Ulfers | 1700 | ALD | X— | L4 | 1.0 | 2.0 | 1.0 | 3.0 |
| 27 | Tom Ogen | 1648 | HON | W62 | L8 | 1.0 | 1.5 | 2.0 | 2.0 |
| 28 | Ken Marley | 1799 | NGC | H— | D6 | 1.0 | 1.5 | 1.5 | 2.5 |
| 29 | Dennis Hom | 1865 | PRA | L22 | W52 | 1.0 | 1.5 | 1.0 | 3.0 |
| 30 | Robert Mastandrea | 1378 | ALC | L6 | W63 | 1.0 | 1.5 | 1.0 | 2.5 |
| 31 | Julian Hodos | 1914 | ALE | D51 | H— | 1.0 | 0.5 | 1.5 | 1.0 |
| 32 | Robert Wisbauer | 1929 | PRA | H— | D50 | 1.0 | 0.5 | 1.5 | 0.5 |
| 33 | Anna Zatonskih | 2479 | LIR | H— | H— | 1.0 | 0.0 | 1.5 | 0.0 |
| 34 | James Critelli | 2165 | LIR | H— | H— | 1.0 | 0.0 | 1.5 | 0.0 |
| 35 | Andy Hellenschmidt | 1988 | LIR | H— | H— | 1.0 | 0.0 | 1.5 | 0.0 |
| 36 | Danny Panico | 1939 | LIR | H— | H— | 1.0 | 0.0 | 1.5 | 0.0 |
| 37 | Keith Rodriguez | 1922 | NGC | H— | H— | 1.0 | 0.0 | 1.5 | 0.0 |
| 38 | Charlie Bonfante | 1902 | LSF | H— | H— | 1.0 | 0.0 | 1.5 | 0.0 |
| 39 | Robert Guevara | 1897 | LIR | H— | H— | 1.0 | 0.0 | 1.5 | 0.0 |
| 40 | Kevin Mahoney | 1881 | NGC | H— | H— | 1.0 | 0.0 | 1.5 | 0.0 |
| 41 | Jim Kolczynski | 1722 | LSF | H— | H— | 1.0 | 0.0 | 1.5 | 0.0 |
| 42 | Danny Wu | 1664 | NGC | H— | H— | 1.0 | 0.0 | 1.5 | 0.0 |
| 43 | Rich Cecchini | 1612 | EDO | H— | H— | 1.0 | 0.0 | 1.5 | 0.0 |
| 44 | Paul Proffman | 1482 | CCC | H— | H— | 1.0 | 0.0 | 1.5 | 0.0 |
| 45 | J Caracciolo | 1420 | LSF | H— | H— | 1.0 | 0.0 | 1.5 | 0.0 |
| 46 | Pete Schilling | 1403 | IND | H— | H— | 1.0 | 0.0 | 1.5 | 0.0 |
| 47 | George Egert | 1398 | NGC | H— | H— | 1.0 | 0.0 | 1.5 | 0.0 |
| 48 | Tony Cretaro | 1142 | CCC | H— | H— | 1.0 | 0.0 | 1.5 | 0.0 |
| 49 | Dave Leone | 2012 | LSF | L5 | D11 | 0.5 | 3.0 | 0.5 | 5.0 |
| 50 | George Alikakos | 1871 | EDO | L2 | D32 | 0.5 | 3.0 | 0.5 | 4.5 |
| 51 | Frank Frohreich | 1717 | ALD | D31 | L12 | 0.5 | 2.5 | 1.0 | 3.5 |
| 52 | Charles Spreckles | 1585 | EDO | D8 | L29 | 0.5 | 2.5 | 1.0 | 3.0 |
| 53 | Ed Hartten | 1379 | ALD | L3 | H— | 0.5 | 2.0 | 0.5 | 3.0 |
| 54 | William DePrisco | 1589 | ALD | H— | L14 | 0.5 | 1.5 | 1.0 | 2.0 |
| 55 | Adrian Celaru | 1574 | ALE | H— | L13 | 0.5 | 1.5 | 1.0 | 2.0 |
| 56 | Mel Goldman | 1510 | ALC | L21 | D57 | 0.5 | 1.5 | 0.5 | 2.5 |
| 57 | Walter Thomas | 1372 | ALE | L24 | D56 | 0.5 | 1.5 | 0.5 | 2.5 |
| 58 | John Kingsley | 1621 | ALC | L20 | H— | 0.5 | 1.0 | 0.5 | 2.0 |
| 59 | Robert Standing | 1751 | LSF | L4 | L17 | 0.0 | 3.5 | 0.0 | 5.0 |
| 60 | Sal Celauro | 2008 | LSF | L15 | L16 | 0.0 | 3.0 | 0.0 | 4.5 |
| 61 | Al Loshin | 1307 | ALC | L11 | L19 | 0.0 | 3.0 | 0.0 | 4.5 |
| 62 | Mel Watnick | 1421 | ALC | L27 | L18 | 0.0 | 2.5 | 0.0 | 4.0 |
| 63 | Carrie Goldstein | 1468 | ALE | L7 | L30 | 0.0 | 2.5 | 0.0 | 3.5 |
| 64 | Justin Greenwald | 1447 | LSF | L23 | L25 | 0.0 | 2.0 | 0.0 | 3.0 |

The League Leader

www.liicl.com

Editor-in-Chief
Robert Rizzo

Copy Editor
Clayton Wilkie

Photography
Kathy Dwulit
Tony Cretaro

Board of Directors

President
George Alikakos

Treasurer
John Kingsley

Rules Director
Tony Sommese

Executive Board

Honeywell/KSF
Tom Ogen

EDO
George Alikakos

Alumni C
John Kingsley

Clear-Cut
Paul Montenero

Alumni D
Ed Rusch

Life Service Foundation
Robert Standing

Northrop Grumman
George Berg

Alumni E
Adrian Celaru

Photon
Jim Dwulit

LIRR
Nick Panico III

The League Leader, © 2006, Long Island Industrial Chess League, is published approximately biweekly during the Long Island Industrial Chess League season from October to May each year. The Long Island Industrial Chess League is a non-profit organization founded for the purpose of promoting goodwill and friendship through the game of chess and to conduct tournaments, matches and other forms of chess competition. Neither the LIICL nor its members assume any responsibility for the accuracy of the information contained herein. No reproduction in part nor in full may be made without the expressed written consent of the Board of Directors of the Long Island Industrial Chess League. Requests and inquiries may be made in writing to:

Board of Directors
LIICL
144 Roxbury Avenue
Oakdale, NY 11769

LIICL Directory

October 7, 2005

| <u>Name</u> | <u>Function</u> | <u>Telephone</u> | <u>E-mail</u> |
|--------------------|---------------------------------------|--|---|
| Alikakos, George | EDO, Captain President, LIICL | 718-836-1250 (H) 631-630-5343 (W) | george.alikakos@DP.ail.com |
| Berg, George | Northrop Grumman, Captain | 516-346-9111 (W) 516-938-5370 (H) | george.berg@ngc.com |
| Dwulit, Jim | Photon Research Assocs., Captain | 631-467-7565 (H) 631-331-6482 (W) | dwulit@photon.com |
| Adrian Celaru | Alumni E, Captain | | acelaru@veeco.com |
| Kingsley, John | Alumni C, Captain Treasurer, LIICL | 631-563-2108 (H) | JKingsley@msn.com |
| Ogen, Thomas | Honeywell/KSF, Captain | 718-446-5443 (H) 516-921-6704 x2880 (W) | Tom_Ogen@ademco.com |
| Sommese, Tony | Rules Director, LIICL | 631-331-6322 (W) | sommese@photon.com |
| Montenero, Paul | Clear-Cut Computing, Captain | 516-845-4081 (W) | clearcut@mindspring.com |
| Rizzo, Robert | Editor, League Leader | 516-575-2306 (W) 516-378-1342 (H) | robert.rizzo@ngc.com rrizknight@juno.com |
| Rusch, Ed | Alumni D, Captain | 516-735-0417 (H) | |
| Standing, Robert | LSF, Captain | 631-271-6120 (H) 631-697-9846 (C) | |
| Huntington Library | Playing Site | 631-427-5165 | ammurphy@suffolk.lib.ny.us |
| LIICL | Board of Directors | | www.liicl.com |

LIICL Quiz 2006

Starting with the Vol. XVI, No.6 edition of the League Leader, a new LIICL chess contest is being launched. It will consist in total of 12 chess related questions, one in each newsletter up until the LIICL Finals. The points will vary depending upon the level of difficulty. There will be prizes for the 5 contestants who compile the most total points. The prizes will be announced soon. Answers to each question can be submitted either via email to liicl@yahoo.com or in person to Bob Rizzo using one of the entry sheets provided during each round. Time is of the essence. To earn full points, your answer must be received no later than midnight of the following round of play. Due to the fact that the time between rounds is not always the same, this will mean that you will have more time to answer some questions than others. For each round that an answer is late, one point will be deducted from your score (assuming your answer is correct). Your answer must contain your name, the quiz problem number and your answer. If submitting by email, please put "LIICL Quiz 2006" in the title. All decisions of the judges are final. The tenth question appears on the following page. Good Luck.

Team Results - Round P2

24-Mar-2006

| LIRR | | AlumniD | CCC | | LSF |
|------------|---------|-------------|-------------|---------|-------------|
| ----- | | | | | |
| PappacenoM | 1.0 0.0 | Frohreich F | LambT | 0.5 0.5 | Leone D |
| PanicoNIII | 1.0 0.0 | Ulfers E | Viale R | 1.0 0.0 | Celauro S |
| Johnson W | 1.0 0.0 | Rusch E | Dorsky M | 1.0 0.0 | Standing R |
| Paciulli F | 1.0 0.0 | DePrisco W | Montenero P | 1.0 0.0 | Greenwald J |
| | 4.0 0.0 | | | 3.5 0.5 | |

Individual Results - Round I2

24-Mar-2006

| White | | Black |
|-------------|---------|--------------|
| ----- | | |
| Shattuck W | 0.5 0.5 | Turiy K |
| Mandelkern | 1.0 0.0 | Celaru A |
| Loshin A | 0.0 1.0 | Zunino H |
| Thomas W | 0.5 0.5 | Goldman M |
| Goldstein C | 0.0 1.0 | Mastandrea R |
| Watnick M | 0.0 1.0 | Lustig D |

| NGC | | Honeywell/KSF | EDO | | PRA |
|----------|---------|---------------|-------------|---------|------------|
| ----- | | | | | |
| Berg G | 1.0 0.0 | Solomon S | Chipkin L | 0.0 1.0 | Cranston T |
| Wilkie C | 1.0 0.0 | Muttreja S | Romero S | 1.0 0.0 | Dwulit J |
| Rizzo R | 1.0 0.0 | Ogen T | Alikakos G | 0.5 0.5 | Wisbauer R |
| Marley K | 0.5 0.5 | Insogna M | Spreckles C | 0.0 1.0 | Hom D |
| | 3.5 0.5 | | | 1.5 2.5 | |

Non-Scheduled, Rated Games

10-Mar-2606

| White | | Black |
|------------|---------|-----------|
| ----- | | |
| PanicoNIII | 1.0 0.0 | Sommese A |
| PanicoNIII | 1.0 0.0 | Celauro S |



"Hooray for us, we won"

CCC's Paul Proffman and the late Paul "Rags" Ragonnet in action at the US Amateur Team

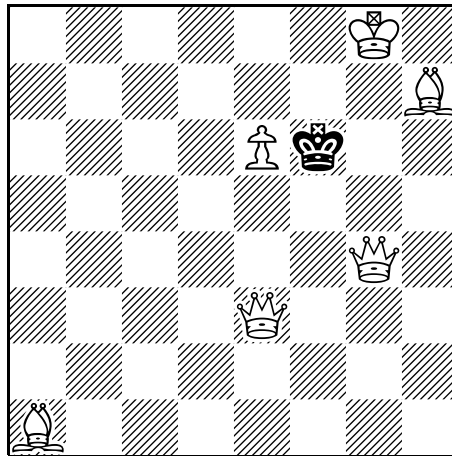
LIICL QUIZ 2006 Answer Form

LIICL Quiz 2006 Question #10:

Oh no, not that same diagram!! In this strange legal position it is Black to move (obviously). For Question #8 you were asked to provide White's last move and Black's last move. Question # 9 asked for the White and Black moves which preceded those asked for in Question #8. For this problem we are asking you to provide the Black and White moves that must have occurred just prior to those asked for in Question # 9. 8 points each will be awarded for White's and Black's correct moves.

Due Date: April 28, 2006

Total Value: 16 Points



Your Name: _____

Your Answer: _____

Rules of Conduct for LIICL Match Play

- 1) Games are played under USCF rules unless otherwise stated in the LIICL Constitution.
- 2) Time Control is game/90 or game/85 + 5 seconds per move. Electronic clocks with time delay take preference.
- 3) All play will start promptly at 6:50 PM. Any player not appearing by 7:50 PM, forfeits the game.
- 4) A primary Tournament Director (TD) will be announced before the onset of play each round. A secondary TD will be announced at that time who will preside over any match that the involves a team which belongs to the same organization as the primary TD.
- 5) Each team is responsible to provide two boards, two sets and two chess clocks.
- 6) All moves must be recorded except if either player has less than five minutes remaining. If moves are not recorded, any claim of repetition is void.
- 7) Clocks must face outward toward the aisle and away from any wall. The TD must have clear visibility. Black has choice of which side he/she wishes to place the clock. Once this is established, then players must rotate the board so as to satisfy the visibility requirement. This may require that not all members of any team will be sitting on the same side of the table.
- 8) Players must sit in order of LIICL rating. If a player is late, the team may postpone assigning players to boards since alternates, if available, must sit in board order. In any case, clocks will start at 6:50 PM. If a board is unfilled and forfeit, this shall not cause the forfeit of any lower board (this is an exception from USCF rules).
- 9) If both opponents are late, the elapsed time should be divided evenly among them upon arrival of the first player.
- 10) If an error was made in setting the clocks or if the clock is not functioning correctly, the time error shall corrected if it can be determined what the correct times should be. If a determination cannot be made, then the elapsed error shall be divided between the players. If this puts a player in severe time trouble or would cause a player to lose on time, then the time will be proportioned at the discretion of the TD.
- 11) To claim a win on time, you must have mating material. Otherwise the game is a draw. According to USCF laws, you must call your opponent's flag. If both flags are down, the game is a draw. Checkmate ends the game but it is always a good idea to stop your clock anyway just to eliminate any arguments.
- 12) With less than five minutes remaining on your clock, you must hit the clock with the same hand which moves the pieces.
- 13) If an illegal move is made, stop the clocks and call the TD. Two minutes will be added to your time if the TD establishes that the opponent has made an illegal move.
- 14) All players must move away from the playing table when their game is concluded. Loud post mortems, kibitzing and any other form of interference are prohibited and can be penalized by the ouster of the guilty party(ies) and/or banishment from the league.
- 15) Table numbers are assigned for each match on the playing schedule.
- 16) Match results, along with names of participants on each board, must be recorded on the results sheet provided and must be submitted to the Rules Director at the end of play.
- 17) A team captain may, without looking at or considering the board position of a game in progress:
 - a) ask a teammate to offer a draw,
 - b) instruct his teammate to accept or refuse a draw offer,or
 - c) tell his teammate the results of any completed games.
- 18) A player may ask his captain if he/she may:
 - a) tender a draw offer,
 - b) accept or reject a draw offer,or
 - c) the score of the match.
- 19) Any conversation among team members not specified in (17) or (18) is illegal.

LIICL 05-06 Playoff Ratings

by Rating

| | | | |
|------|------|-------------------|-----|
| 2479 | USCF | Zatonskih, Anna | LIR |
| 2165 | USCF | Critelli, James | LIR |
| 2162 | | Berg, George | NGC |
| 2111 | | Pappaceno, Mike | LIR |
| 2073 | | Chipkin, Len | EDO |
| 2012 | | Leone, Dave | LSF |
| 2008 | /6 | Celauro Sal | LSF |
| 2000 | | Panico, Nick III | LIR |
| 1988 | /5 | Hellenschmidt A | LIR |
| 1978 | | Wilkie, Clayton | NGC |
| 1969 | | Cranston, Tim | PRA |
| 1951 | | Rizzo, Robert | NGC |
| 1941 | | Johnson, Willie | LIR |
| 1939 | | Panico, Danny | LIR |
| 1935 | | Dwulit, James | PRA |
| 1934 | | Romero, Steve | EDO |
| 1929 | | Wisbauer, Robert | PRA |
| 1922 | | Rodriguez, Keith | NGC |
| 1914 | | Hodos, Julian | ALE |
| 1902 | | Bonfante, Charles | LSF |
| 1897 | /6 | Guevara, Robert | LIR |
| 1888 | | Lamb, Terry | CCC |
| 1881 | | Mahoney, Kevin | NGC |
| 1871 | | Alikakos, George | EDO |
| 1865 | | Hom, Dennis | PRA |
| 1844 | USCF | Paciulli F | LIR |
| 1843 | | Viale, Richard | CCC |
| 1842 | /7 | Dorsky Michael | CCC |
| 1827 | | Solomon, Steve | HON |
| 1805 | | Sommese, Anthon | PRA |
| 1799 | | Marley, Ken T | NGC |
| 1751 | | Standing, Robert | LSF |
| 1736 | | Muttreja, Suresh | HON |
| 1722 | | Kolczynski, Jim | LSF |
| 1717 | | Frohreich, Frank | ALD |
| 1714 | | Montenero, Paul | CCC |
| 1700 | | Ulfers, Ed | ALD |
| 1664 | | Wu, Danny | NGC |
| 1648 | | Ogen, Tom | HON |
| 1621 | | Kingsley, John | ALC |
| 1612 | | Cecchini, Richard | EDO |
| 1600 | | Insogna, Matt | HON |
| 1599 | | Rusch, Ed | ALD |
| 1589 | /5 | DePrisco, William | ALD |
| 1585 | | Spreckles, Charle | EDO |
| 1574 | | Celaru, Adrian | ALE |
| 1556 | | Shattuck, John | ALD |
| 1510 | | Goldman, Mel | ALC |
| 1482 | | Proffman, Paul | CCC |
| 1468 | | Goldstein, Carrie | ALE |
| 1447 | | Greenwald, Justin | LSF |
| 1421 | | Watnick, Mel | ALC |
| 1420 | EST | Caracciolo, J | LSF |
| 1403 | USCF | Schilling, Pete | IND |
| 1398 | /6 | Egert, George | NGC |
| 1379 | | Hartten, Ed | ALD |
| 1378 | | Mastandrea, Robe | ALC |
| 1372 | | Thomas, Walter | ALE |
| 1307 | | Loshin, Al | ALC |
| 1202 | | Zunino, Hugo | ALD |
| 1142 | | Cretaro, Tony | CCC |

LIICL 05-06 Playoff Ratings

by Name

| | | | |
|------|------|-------------------|-----|
| 1871 | | Alikakos, George | EDO |
| 2162 | | Berg, George | NGC |
| 1902 | | Bonfante, Charles | LSF |
| 1420 | EST | Caracciolo, J | LSF |
| 1612 | | Cecchini, Richard | EDO |
| 1574 | | Celaru, Adrian | ALE |
| 2008 | /6 | Celauro Sal | LSF |
| 2073 | | Chipkin, Len | EDO |
| 1969 | | Cranston, Tim | PRA |
| 1142 | | Cretaro, Tony | CCC |
| 2165 | USCF | Critelli, James | LIR |
| 1589 | /5 | DePrisco, William | ALD |
| 1842 | /7 | Dorsky Michael | CCC |
| 1935 | | Dwulit, James | PRA |
| 1398 | /6 | Egert, George | NGC |
| 1717 | | Frohreich, Frank | ALD |
| 1510 | | Goldman, Mel | ALC |
| 1468 | | Goldstein, Carrie | ALE |
| 1447 | | Greenwald, Justin | LSF |
| 1897 | /6 | Guevara, Robert | LIR |
| 1379 | | Hartten, Ed | ALD |
| 1988 | /5 | Hellenschmidt A | LIR |
| 1914 | | Hodos, Julian | ALE |
| 1865 | | Hom, Dennis | PRA |
| 1600 | | Insogna, Matt | HON |
| 1941 | | Johnson, Willie | LIR |
| 1621 | | Kingsley, John | ALC |
| 1722 | | Kolczynski, Jim | LSF |
| 1888 | | Lamb, Terry | CCC |
| 2012 | | Leone, Dave | LSF |
| 1307 | | Loshin, Al | ALC |
| 1881 | | Mahoney, Kevin | NGC |
| 1799 | | Marley, Ken T | NGC |
| 1378 | | Mastandrea, Robe | ALC |
| 1714 | | Montenero, Paul | CCC |
| 1736 | | Muttreja, Suresh | HON |
| 1648 | | Ogen, Tom | HON |
| 1844 | USCF | Paciulli F | LIR |
| 1939 | | Panico, Danny | LIR |
| 2000 | | Panico, Nick III | LIR |
| 2111 | | Pappaceno, Mike | LIR |
| 1482 | | Proffman, Paul | CCC |
| 1951 | | Rizzo, Robert | NGC |
| 1922 | | Rodriguez, Keith | NGC |
| 1934 | | Romero, Steve | EDO |
| 1599 | | Rusch, Ed | ALD |
| 1403 | USCF | Schilling, Pete | IND |
| 1556 | | Shattuck, John | ALD |
| 1827 | | Solomon, Steve | HON |
| 1805 | | Sommese, Anthon | PRA |
| 1585 | | Spreckles, Charle | EDO |
| 1751 | | Standing, Robert | LSF |
| 1372 | | Thomas, Walter | ALE |
| 1700 | | Ulfers, Ed | ALD |
| 1843 | | Viale, Richard | CCC |
| 1421 | | Watnick, Mel | ALC |
| 1978 | | Wilkie, Clayton | NGC |
| 1929 | | Wisbauer, Robert | PRA |
| 1664 | | Wu, Danny | NGC |
| 2479 | USCF | Zatonskih, Anna | LIR |
| 1202 | | Zunino, Hugo | ALD |

LIICL 05-06 Playoff Ratings

by Team

| | | | |
|------|------|-------------------|-----|
| 1621 | | Kingsley, John | ALC |
| 1510 | | Goldman, Mel | ALC |
| 1421 | | Watnick, Mel | ALC |
| 1378 | | Mastandrea, Robe | ALC |
| 1307 | | Loshin, Al | ALC |
| 1717 | | Frohreich, Frank | ALD |
| 1700 | | Ulfers, Ed | ALD |
| 1599 | | Rusch, Ed | ALD |
| 1589 | /5 | DePrisco, William | ALD |
| 1556 | | Shattuck, John | ALD |
| 1379 | | Hartten, Ed | ALD |
| 1202 | | Zunino, Hugo | ALD |
| 1914 | | Hodos, Julian | ALE |
| 1574 | | Celaru, Adrian | ALE |
| 1468 | | Goldstein, Carrie | ALE |
| 1372 | | Thomas, Walter | ALE |
| 1888 | | Lamb, Terry | CCC |
| 1843 | | Viale, Richard | CCC |
| 1842 | /7 | Dorsky Michael | CCC |
| 1714 | | Montenero, Paul | CCC |
| 1482 | | Proffman, Paul | CCC |
| 1142 | | Cretaro, Tony | CCC |
| 2073 | | Chipkin, Len | EDO |
| 1934 | | Romero, Steve | EDO |
| 1871 | | Alikakos, George | EDO |
| 1612 | | Cecchini, Richard | EDO |
| 1585 | | Spreckles, Charle | EDO |
| 1827 | | Solomon, Steve | HON |
| 1736 | | Muttreja, Suresh | HON |
| 1648 | | Ogen, Tom | HON |
| 1600 | | Insogna, Matt | HON |
| 1403 | USCF | Schilling, Pete | IND |
| 2479 | USCF | Zatonskih, Anna | LIR |
| 2165 | USCF | Critelli, James | LIR |
| 2111 | | Pappaceno, Mike | LIR |
| 2000 | | Panico, Nick III | LIR |
| 1988 | /5 | Hellenschmidt A | LIR |
| 1941 | | Johnson, Willie | LIR |
| 1939 | | Panico, Danny | LIR |
| 1897 | /6 | Guevara, Robert | LIR |
| 1844 | USCF | Paciulli F | LIR |
| 2012 | | Leone, Dave | LSF |
| 2008 | /6 | Celauro Sal | LSF |
| 1902 | | Bonfante, Charles | LSF |
| 1751 | | Standing, Robert | LSF |
| 1722 | | Kolczynski, Jim | LSF |
| 1447 | | Greenwald, Justin | LSF |
| 1420 | EST | Caracciolo, J | LSF |
| 2162 | | Berg, George | NGC |
| 1978 | | Wilkie, Clayton | NGC |
| 1951 | | Rizzo, Robert | NGC |
| 1922 | | Rodriguez, Keith | NGC |
| 1881 | | Mahoney, Kevin | NGC |
| 1799 | | Marley, Ken T | NGC |
| 1664 | | Wu, Danny | NGC |
| 1398 | /6 | Egert, George | NGC |
| 1969 | | Cranston, Tim | PRA |
| 1935 | | Dwulit, James | PRA |
| 1929 | | Wisbauer, Robert | PRA |
| 1865 | | Hom, Dennis | PRA |
| 1805 | | Sommese, Anthon | PRA |

LIICL Team Tie-Break Chart Playoffs 2005-06

| | LIR | LSF | CCC | NGC | PRA | EDO | ALE | HON | ALC | ALD |
|-----|-----|-----|-----|-----|-----|-----|-----|-----|-----|-----|
| LIR | | LIR | LIR | LIR | LIR | LIR | LIR | LIR | LIR | LIR |
| LSF | LIR | | LSF | NGC | LSF | EDO | LSF | LSF | LSF | LSF |
| CCC | LIR | LSF | | NGC | CCC | EDO | CCC | CCC | CCC | CCC |
| NGC | LIR | NGC | NGC | | PRA | NGC | NGC | NGC | NGC | NGC |
| PRA | LIR | LSF | CCC | PRA | | PRA | PRA | PRA | PRA | PRA |
| EDO | LIR | EDO | EDO | NGC | PRA | | EDO | EDO | EDO | EDO |
| ALE | LIR | LSF | CCC | NGC | PRA | EDO | | HON | ALE | ALD |
| HON | LIR | LSF | CCC | NGC | PRA | EDO | HON | | HON | HON |
| ALC | LIR | LSF | CCC | NGC | PRA | EDO | ALE | HON | | ALD |
| ALD | LIR | LSF | CCC | NGC | PRA | EDO | ALD | HON | ALD | |

CCC Captures Under 1800 title

(continued from page 1)

tion. **29.Kf2g5 30.Rc8+ Kg7 31.Rc7 Rd4** an admission that Black's Rook should never have left d4 in the first place **32.Rxf7+ Kg6 33.Rf6+ Kh5** Black hopes to use the King in his attack, but does not yet believe the game has irrevocably shifted to White's favor **34.Bf7+ Kg4 35.Rxh6 Rd2+??** The definitive losing move. This check drives White's King to the e3 square, where it performs two signifi-

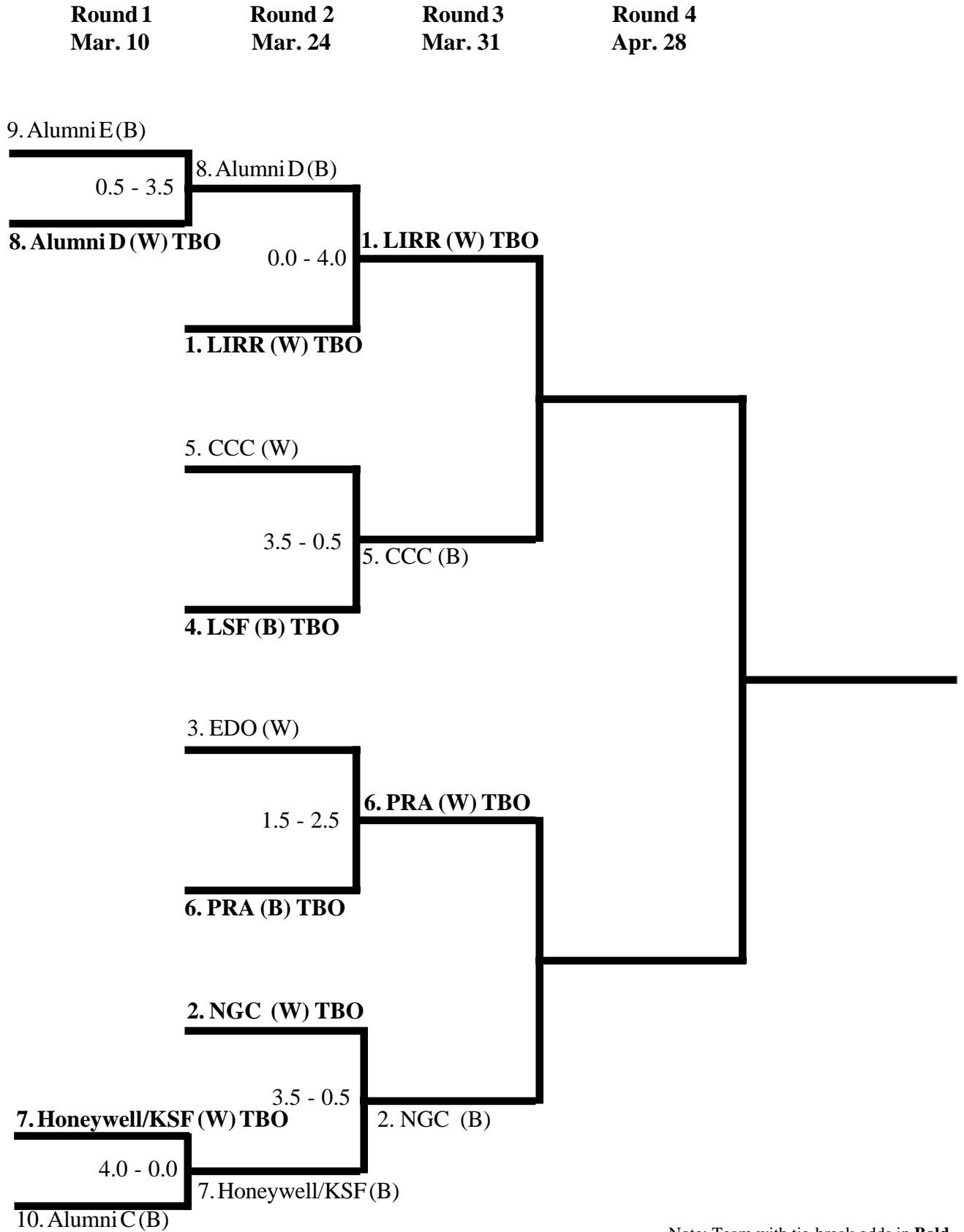
cant roles. It prevents Black's King from moving to f4 while simultaneously attacking Black's Rook. f4+ is of no use as White's Kings captures the Rook on d2 thus, 36... Rb2 is virtually forced but losing. **36.Ke3 Rxb2??**

Someone once said, "When you see a good move in chess, keep searching and you might find a better one." Well the obvious move for White was Rh7, finally captur-

ing that wayward Bishop. But something on the board looked too good to be true: Only then did I see it, a forced mate in 2. **37.Bh5+ Kh3 38.Bf3# 1-0** Note that if Black had tried f4 on move 25, 36. Be6+ Bf5, 37. h3++ would have also been mate.

Again, best game? Absolutely not. Most interesting? That's for someone else to decide.

2005-2006 LIICL Playoff Brackets



Note: Team with tie-break odds in **Bold**

2005-2006 LIICL Regular Season Schedule, Rev. G 2/11/06

Starting time for the regular season is 6:50 PM. Time control is game/90 or game/85 + 5 sec/move.

| Round | 1 | 2 | 3 | 4 | 5 | 6 | 7 | 8 | 9 | 10 | 11 | 12 |
|----------------|--------|--------|--------|--------|--------|--------|--------|--------|--------|--------|--------|--------|
| Date | 09-Sep | 23-Sep | 07-Oct | 21-Oct | 04-Nov | 18-Nov | 02-Dec | 16-Dec | 06-Jan | 20-Jan | 03-Feb | 24-Feb |
| Location | LIB | LIB | LIB | LIB | LIB | LIB | LIB | LIB | LIB | LIB | LIB | LIB |
| 1LSF | A W | 2 W | 3 B | 4 W | 5 W S | 5 B D | 6 W C | 7 B | 5 B | 8 W | 9 B | 6 B D |
| 2LIRR | 9 W S | 1 B | A W | 3 W | 7 W | 4 B | 5 W D | 6 B C | 7 B | 7 W | 8 B | 7 B S |
| 3Alumni D | 8 W | 9 B S | 1 W | 2 B | A B | A W | 4 W | 5 B D | 4 B | 6 W C | 7 B | 4 W |
| 4Alumni C | 7 W | 8 B | 9 W S | 1 B | 9 B | 2 W | 3 B | A W | 3 W | 5 W D | 6 B C | 3 B |
| 5PRA | 6 W | 7 B | 8 W | 9 B S | 1 B C | 1 W | 2 B | 3 W | 1 W S | 4 B | A W D | 8 B |
| 6EDO | 5 B C | A B | 7 W | 8 B | 8 W D | 9 W S | 1 B | 2 W | 8 B | 3 B | 4 W | 1 W |
| 7NGC | 4 B D | 5 W C | 6 B | A B | 2 B | 8 W | 9 B S | 1 W | 2 W D | 2 B | 3 W | 2 W |
| 8CCC | 3 B | 4 W D | 5 B C | 6 W | 6 B | 7 B | A B | 9 W S | 6 W C | 1 B | 2 W | 5 W |
| 9Alumni E | 2 B | 3 W | 4 B D | 5 W C | 4 W | 6 B | 7 W | 8 B | A W | A B S | 1 W | A W |
| A Honeywell/KS | 1 B | 6 W | 2 B | 7 W D | 3 W | 3 B C | 8 W | 4 B | 9 B | 9 W | 5 B S | 9 B C |

Explanation: Rounds 5, 9 & 12 are position rounds. Opponents will be determined based upon standings.
 Pairings for Position Rounds are: First vs. Second, Third vs. Fourth, Fifth vs. Sixth, Seventh vs. Eighth and Ninth vs. Tenth
 Pairings for Round 1 of the Playoffs: Seventh vs. Tenth and Eighth vs. Ninth, First through Sixth have Byes

Starting time for the playoffs is 6:50 PM. Time control is game/90 or game/85 + 5 sec/move.

Playoffs: Round 1: (LIB) 10-Mar Quarters: (LIB) 24-Mar Semis: (LIB) 31-Mar Finals: (LIB) 28-Apr Individual Final: (LIB) 05-May

Events: Charity Blitz: (TBD) TBD GM Simul: (TBD) TBD Awards Evening: (LIB) 19-May

Key: D = Director UMC= United Methodist Church W= White on Board 1
 S = Secondary Director CCH= The Congregational Church of Huntington B= Black on Board 1
 C = Coffee Duty LIB= Huntington Library TBD= To Be Determined