



The League Leader

The Official Newsletter of the Long Island Industrial Chess League

Volume XVI, Number 17

www.liicl.com

May 5, 2006

LIRR Regains LIICL Title

More on the Kramnik-Fritz Match

The match will be held November 25 to December 5 and will consist of 6 games. The venue is the Art and Exhibition Hall in Bonne, Germany. Kramnik can capture a prize of \$0.5 Million US for a win in addition to the \$0.5 appearance fee he gets just to show up!

Here is the playing schedule:

Game 1: November 25
 Game 2: November 27
 Game 3: November 29
 Game 4: December 1
 Game 5: December 3
 Game 6: December 5

Kramnik will undoubtedly be the underdog based upon past computer performances vs. top flight GMs.

Individual Final to be Held May 5

Will George Berg hold his lead going into the final round and have an additional reason to celebrate Cinco de Mayo? If so will he choose Tequilla or perhaps a Margarita? By outlasting Clay Wilkie in round 4, George only needs a draw to earn at worst a piece of the title. There are a group of 7 players just behind him with 3 points who would like to have some say in the issue.

It will be up to the computer to determine who will be the person to try to beat George and give the rest of the field a chance to win. The top Under 1800 is currently Nick Panico Sr. But he can't win it unless he plays due to the 2 bye limit rule for prize eligibility.

Top Seed Wins 2.5-1.5

If not for the hiatus that the LIRR took last season, this year's championship might have made it three in a row. They regained the LIICL title by beating Photon, the 6th seed overall. LIRR was as dominant in the playoffs as they were in the regular season where they earned tie-breaks over every other team. PRA retained the second overall trophy by advancing to the finals.

Clear-Cut Computing captured the Under 1800 trophy but it appears that they will be moving up to the open category next year with the influx of a number of rapidly improving players. Ademco/KSF won the second Under 1800 hardware.

Submit Your Games

To capture a Best Game or Best Combination award, you must submit the game score. To date we have very few games to select from. Submit those games and capture a Ronnie!

Election Nominations

It is almost time for the Election of Officers. The Treasurer and President cannot run again due to term limits. Please make nominations for all 3 officers. Elections are held on May 19th.

LIICL Awards on May 19th

The capstone of the LIICL season will take place on May 19th. Along with the awarding of Ronnies, there will be the LIICL Speed Championship, plenty of food and Election of Officers. Don't miss it!

In This Issue

More on the Kramnik-Fritz Match	1
Individual Final to be Held May 5th	1
Top Seed Wins 2.5-1.5	1
Submit Your Games	1
Election Nominations	1
LIICL Awards on May 19th	1
2005-06 LIICL Team Standings	1
LIICL Playoff Ratings	2
LIICL Directory	3
Zwischenzug with Jimocz	4
Team Results - Round P4	5
Individual Results - Round I4	5
Quiz Question #12	6
Individual Swiss Standings	7
LIICL Playoff Brackets	8

Final 2005-2006 LIICL Regular Season Team Standings

Team	Team LIICL			—Games—				—Match—				F
	Rating	Pts	TB's	W	L	D	Pts	W	L	D	Pts	
LIRR	2199	202	222.50	33	4	11	38.5	9	1	2	10.0	0
NGC	2015	174	186.00	25	10	13	31.5	7	3	2	8.0	0
EDO	1848	162	165.25	25	15	8	29.0	6	2	4	8.0	2
LSF	1861	156	140.25	24	18	6	27.0	6	4	2	7.0	0
CCC	1715	150	133.75	25	21	2	26.0	6	3	3	7.5	2
PRA	1925	146	144.25	24	19	5	26.5	7	4	1	7.5	8
Honeywell/KS	1692	130	74.00	18	23	7	21.5	5	6	1	5.5	4
Alumni D	1655	105	38.75	14	32	2	15.0	2	7	3	3.5	3
Alumni E	1601	100	51.25	11	31	6	14.0	2	9	1	2.5	4
Alumni C	1517	88	48.50	9	37	2	10.0	0	11	1	0.5	0

LIICL 05-06 Playoff Ratings

by Rating

2479	USCF	Zatonskih, Anna	LIR
2165	USCF	Critelli, James	LIR
2162		Berg, George	NGC
2111		Pappaceno, Mike	LIR
2073		Chipkin, Len	EDO
2012		Leone, Dave	LSF
2008	/6	Celauro Sal	LSF
2000		Panico, Nick III	LIR
1988	/5	Hellenschmidt A	LIR
1978		Wilkie, Clayton	NGC
1969		Cranston, Tim	PRA
1951		Rizzo, Robert	NGC
1941		Johnson, Willie	LIR
1939		Panico, Danny	LIR
1935		Dwulit, James	PRA
1934		Romero, Steve	EDO
1929		Wisbauer, Robert	PRA
1922		Rodriguez, Keith	NGC
1914		Hodos, Julian	ALE
1902		Bonfante, Charles	LSF
1897	/6	Guevara, Robert	LIR
1888		Lamb, Terry	CCC
1881		Mahoney, Kevin	NGC
1871		Alikakos, George	EDO
1865		Hom, Dennis	PRA
1844	USCF	Paciulli F	LIR
1843		Viale, Richard	CCC
1842	/7	Dorsky Michael	CCC
1827		Solomon, Steve	HON
1805		Sommese, Anthon	PRA
1799		Marley, Ken T	NGC
1751		Standing, Robert	LSF
1736		Muttreja, Suresh	HON
1722		Kolczynski, Jim	LSF
1717		Frohreich, Frank	ALD
1714		Montenero, Paul	CCC
1700		Ulfers, Ed	ALD
1664		Wu, Danny	NGC
1648		Ogen, Tom	HON
1621		Kingsley, John	ALC
1612		Cecchini, Richard	EDO
1600		Insogna, Matt	HON
1599		Rusch, Ed	ALD
1589	/5	DePrisco, William	ALD
1585		Spreckles, Charle	EDO
1574		Celaru, Adrian	ALE
1556		Shattuck, John	ALD
1510		Goldman, Mel	ALC
1482		Proffman, Paul	CCC
1468		Goldstein, Carrie	ALE
1447		Greenwald, Justin	LSF
1421		Watnick, Mel	ALC
1420	EST	Caracciolo, J	LSF
1403	USCF	Schilling, Pete	IND
1398	/6	Egert, George	NGC
1379		Hartten, Ed	ALD
1378		Mastandrea, Robe	ALC
1372		Thomas, Walter	ALE
1307		Loshin, Al	ALC
1202		Zunino, Hugo	ALD
1142		Cretaro, Tony	CCC

LIICL 05-06 Playoff Ratings

by Name

1871		Alikakos, George	EDO
2162		Berg, George	NGC
1902		Bonfante, Charles	LSF
1420	EST	Caracciolo, J	LSF
1612		Cecchini, Richard	EDO
1574		Celaru, Adrian	ALE
2008	/6	Celauro Sal	LSF
2073		Chipkin, Len	EDO
1969		Cranston, Tim	PRA
1142		Cretaro, Tony	CCC
2165	USCF	Critelli, James	LIR
1589	/5	DePrisco, William	ALD
1842	/7	Dorsky Michael	CCC
1935		Dwulit, James	PRA
1398	/6	Egert, George	NGC
1717		Frohreich, Frank	ALD
1510		Goldman, Mel	ALC
1468		Goldstein, Carrie	ALE
1447		Greenwald, Justin	LSF
1897	/6	Guevara, Robert	LIR
1379		Hartten, Ed	ALD
1988	/5	Hellenschmidt A	LIR
1914		Hodos, Julian	ALE
1865		Hom, Dennis	PRA
1600		Insogna, Matt	HON
1941		Johnson, Willie	LIR
1621		Kingsley, John	ALC
1722		Kolczynski, Jim	LSF
1888		Lamb, Terry	CCC
2012		Leone, Dave	LSF
1307		Loshin, Al	ALC
1881		Mahoney, Kevin	NGC
1799		Marley, Ken T	NGC
1378		Mastandrea, Robe	ALC
1714		Montenero, Paul	CCC
1736		Muttreja, Suresh	HON
1648		Ogen, Tom	HON
1844	USCF	Paciulli F	LIR
1939		Panico, Danny	LIR
2000		Panico, Nick III	LIR
2111		Pappaceno, Mike	LIR
1482		Proffman, Paul	CCC
1951		Rizzo, Robert	NGC
1922		Rodriguez, Keith	NGC
1934		Romero, Steve	EDO
1599		Rusch, Ed	ALD
1403	USCF	Schilling, Pete	IND
1556		Shattuck, John	ALD
1827		Solomon, Steve	HON
1805		Sommese, Anthon	PRA
1585		Spreckles, Charle	EDO
1751		Standing, Robert	LSF
1372		Thomas, Walter	ALE
1700		Ulfers, Ed	ALD
1843		Viale, Richard	CCC
1421		Watnick, Mel	ALC
1978		Wilkie, Clayton	NGC
1929		Wisbauer, Robert	PRA
1664		Wu, Danny	NGC
2479	USCF	Zatonskih, Anna	LIR
1202		Zunino, Hugo	ALD

The League Leader

www.liicl.com

Editor-in-Chief
Robert Rizzo

Copy Editor
Clayton Wilkie

Photography
Kathy Dwulit
Tony Cretaro

Board of Directors

President
George Alikakos

Treasurer
John Kingsley

Rules Director
Tony Sommese

Executive Board

Honeywell/KSF
Tom Ogen

EDO
George Alikakos

Alumni C
John Kinglsey

Clear-Cut
Paul Montenero

Alumni D
Ed Rusch

Life Service Foundation
Robert Standing

Northrop Grumman
George Berg

Alumni E
Adrian Celaru

Photon
Jim Dwulit

LIRR
Nick Panico III

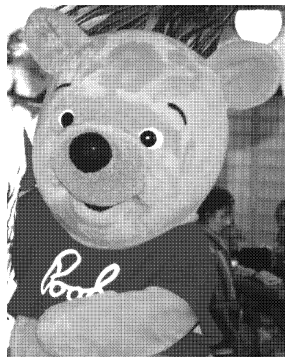
The League Leader, © 2006, Long Island Industrial Chess League, is published approximately biweekly during the Long Island Industrial Chess League season from October to May each year. The Long Island Industrial Chess League is a non-profit organization founded for the purpose of promoting goodwill and friendship through the game of chess and to conduct tournaments, matches and other forms of chess competition. Neither the LIICL nor its members assume any responsibility for the accuracy of the information contained herein. No reproduction in part nor in full may be made without the expressed written consent of the Board of Directors of the Long Island Industrial Chess League. Requests and inquiries may be made in writing to:

Board of Directors
LIICL
144 Roxbury Avenue
Oakdale, NY 11769

LIICL Directory

October 7, 2005

<u>Name</u>	<u>Function</u>	<u>Telephone</u>	<u>E-mail</u>
Alikakos, George	EDO, Captain President, LIICL	718-836-1250 (H) 631-630-5343 (W)	george.alikakos@DP.ail.com
Berg, George	Northrop Grumman, Captain	516-346-9111 (W) 516-938-5370 (H)	george.berg@ngc.com
Dwulit, Jim	Photon Research Assocs., Captain	631-467-7565 (H) 631-331-6482 (W)	dwulit@photon.com
Adrian Celaru	Alumni E, Captain		acelaru@veeco.com
Kingsley, John	Alumni C, Captain Treasurer, LIICL	631-563-2108 (H)	JKingsley@msn.com
Ogen, Thomas	Honeywell/KSF, Captain	718-446-5443 (H) 516-921-6704 x2880 (W)	Tom_Ogen@ademco.com
Sommese, Tony	Rules Director, LIICL	631-331-6322 (W)	sommese@photon.com
Montenero, Paul	Clear-Cut Computing, Captain	516-845-4081 (W)	clearcut@mindspring.com
Rizzo, Robert	Editor, League Leader	516-575-2306 (W) 516-378-1342 (H)	robert.rizzo@ngc.com rrizknight@juno.com
Rusch, Ed	Alumni D, Captain	516-735-0417 (H)	
Standing, Robert	LSF, Captain	631-271-6120 (H) 631-697-9846 (C)	
Huntington Library	Playing Site	631-427-5165	ammurphy@suffolk.lib.ny.us
LIICL	Board of Directors		www.liicl.com



Zwischenzug with Jimocx

Gratz to the LIRR, one of the strongest teams to have played in the LIICL — ever. It is even cooler that they are able to bring a reigning US Champion to play in our league! As Rachel Ray says, “How cool is that!”

Since we started in about cooking, what’s for eatin’? Well, we had a smorgasbord of excellent playoff games and I am gonna share some with you. In round 1, there was a game between Dennis Hom and Len Chipkin. It was a slugfest that ended with Dennis on the losing end. However Shredder analysis revealed that Dennis had a won game. The position of interest is in figure 1

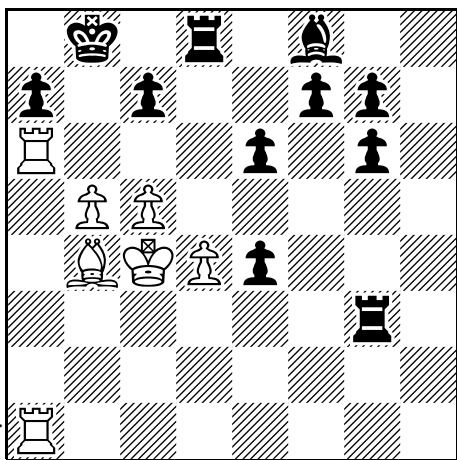


Figure 1 White has just played 31. Kc4 in the Chipkin-Hom game.

In this game Lenny had sac’d a knight to achieve this massive attack. He is threatening the a pawn followed by mate. Unfortunately, Dennis followed with 31 ... e5 which led to a miserable lost position. Instead he had the move 31 ... Rd6! Which threatens mate in 1 (R8xd5) and which will liquidate the strong pawn center and bring about a winning position with the overwhelming kingside pawns.

Also uncovered in this post mortem, Dennis had an earlier queen sac which would have clarified his position and allow a grind-

It is hard to believe another season is behind us!

em-down win. In figure 2, Dennis could have played 23.... Qxf4! After 24 ef Nxd5+ the queen is retrieved and the knight is returned for the 2 pawns with a clarified game. That is a tough move to see when playing and a nervier one to make. It takes guts to trade your queen for a pawn — even if you are sure you will recover it. (There is always a nagging doubt that you are blundering away your queen!)

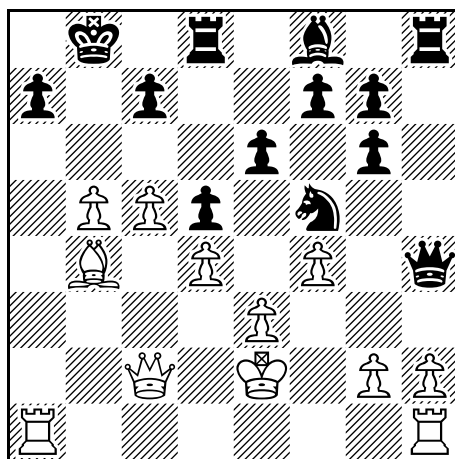


Figure 2 Chipkin-Hom white played 23. Bb4

A nice win by Lenny and a tough loss for Dennis.

In round 2 the game of interest was Dwulit-Romero. In this game Dwulit was a little too willy-nilly in leaving the kingside undefended. Romero brought his can of whoop-ass and sac’d not one, but 2 pieces to drive out White’s king. A pretty finish to an instructive game – don’t leave the kingside unguarded! Figure 3 shows the position where the sacs are about to arrive. White has just noticed how much trouble he is in and played 21 g3 to stem the assault on his h pawn. Black responded with 21Nxb2!

(See figure 3)

White responded with 22 Kxh2. After which followed 22 ... Qh4+ (the g pawn is pinned!) 23. Kg1 and then Romero uncorked a smasher! He saced his second piece in three moves and played 23 ... Bxg3+!! After which the game is lost for white. A brilliant butt kickin’ finish!

There is a point in the game before

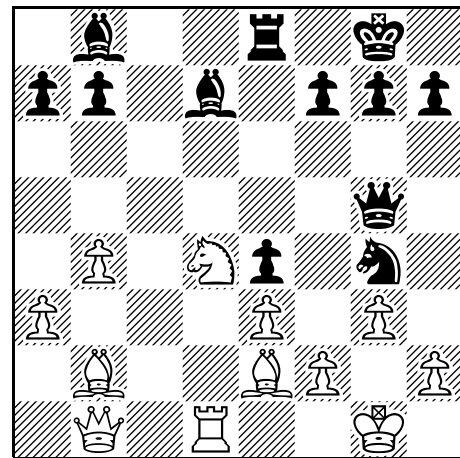


Figure 3 Dwulit-Romero after 21. g3

the sacs that Dwulit could have salvaged the game.

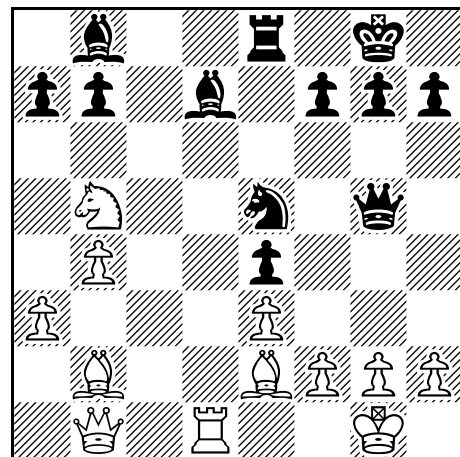


Figure 4 After 19...Qg5 in Dwulit – Romero

At this point Dwulit had a suspicion that his King position was a bit untended. So he played 20. Nd4 to try to bring his knight into the king’s service. A better move would have been 20. Nd6! I believe this move saves the game since it hits the e pawn and rook and compels black to trade the devastating bishop for the knight; After which the white queen threatens the e pawn while the rook threatens the bishop on d7. In any event, a very nervy and well played game by Romero.

In round 4, the game of interest is Panico-Dwulit. Dwulit gambited a pawn in the

opening for piece activity and the game was even (at least according to Shredder) until near the end of the game, Panico opted to build up pressure on Black's e pawn. But Black responded with some nasty pins that were hard to shake. In figure 5, Black has just played 25..Bh3 which sets up a mating threat (Qxb3 Qxb3 Ra1 with a mate soon after.)

To parry the mate White played 26 f3 giving the King some breathing room. Unfortunately, Black continued with 26..Rxb3 after which White played 27.Qe1 and resigned. Black would have continued with Rxe3 and mate would follow (mate in 6 according to Shredder) A nice game by Dwulit.

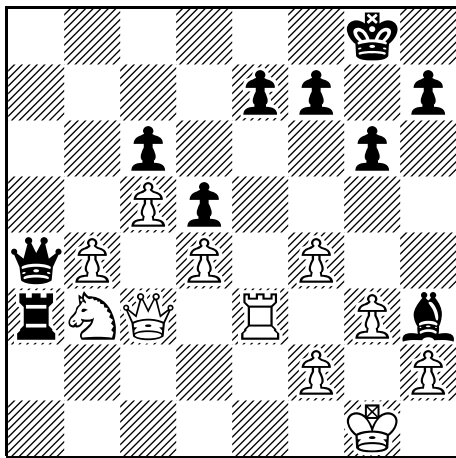


Figure 5 Panico-Dwulit after 25...Bh3

I hope the next season is as great as this one. Remember to get involved and submit games to the league leader! And remember; tell 'em Jimocz sent you!

Games mentioned above:

[Event "LIICL"]
 [Site "Huntington,NY"]
 [Date "2006.03.10"]
 [Round "P1"]
 [White "L. Chipkin[EDO]"]
 [Black "D. Hom[PRA]"]
 [Result "1-0"]
 [WhiteElo "2073"]
 [BlackElo "1865"]
 [Opening "Queen's pawn: stonewall attack"]
 [ECO "D00"]
 1. d4 d5 2. e3 Nf6 3. Bd3 Bg4 4. Ne2 Nc6 5. f3 Bh5 6. Nf4 Bg6 7. Nxg6 hxg6 8. f4 e6 9. Qf3 Qd7 10. c3 O-O-O 11. Nd2 Kb8 12. a4 Ne7 13. b4 Nf5 14. Bb5 Qe7 15. Ba3 Nh4 16. Qe2 Ne4 17. Nb3 Nxc3 18. Qc2 Nxb5 19. axb5 Nf5 20. Ke2 b6 21. Nc5 bxc5 22. bxc5 Qh4 23. Bb4 Qg4+ 24. Kd3 Nxd4 25. exd4 Qxf4 26. Rhf1 Qe4+ 27. Kc3 Rxh2 28. Qxe4 dxe4 29. Ra6 Rxg2 30. Rfa1 Rg3+ 31. Kc4 e5 32. d5 Rd3 33. Rxa7 Kc8 34. Ra8+ Kd7 35. c6+ Ke8 36. Rxd8+ 1-0

[Event "LIICL"]
 [Site "Huntington,NY"]
 [Date "2006.03.24"]

[Round "P2"]
 [White "Dwulit"]
 [Black "Romero"]
 [Result "0-1"]
 [WhiteElo "1935"]
 [BlackElo "1934"]
 1. b4 d5 2. Bb2 e6 3. a3 Nf6 4. e3 Bd6 5. Nf3 Nbd7 6. c4 c6 7. d4 O-O 8. Nbd2 Re8 9. Qc2 e5 10. cxd5 exd4 11. Nxd4 cxd5 12. Be2 Ne5 13. O-O Bd7 14. Rac1 Rc8 15. Qb1 Rxc1 16. Rxc1 Ne4 17. Nxe4 dxe4 18. Nb5 Bb8 19. Rd1 Qg5 20. Nd4 Ng4 21. g3 Nxh2 22. Kxh2 Qh4+ 23. Kg1 Bxg3 24. fxc3 Qxc3+ 25. Kh1 Re5 26. Nf5 Qh3+ 27. Kg1 Rxf5 28. Rxd7 0-1

[Event "LIICL Playoff Finals"]
 [Site "Huntington Library"]
 [Date "2006.04.28"]
 [Round "P4"]
 [White "N. Panico III"]
 [Black "J. Dwulit"]
 [Result "0-1"]
 [WhiteElo "2000"]
 [BlackElo "1935"]
 1. d4 Nf6 2. Bf4 d5 3. e3 c5 4. c3 Bf5 5. dxc5 Nc6 6. Nf3 Nh5 7. b4 Nxf4 8. exf4 g6 9. Bb5 a6 10. Ba4 Bg7 11. Nd4 Bd7 12. O-O O-O 13. Bxc6 bxc6 14. Nd2 Qc7 15. g3 a5 16. a3 axb4 17. axb4 Bxd4 18. cxd4 Rfb8 19. Rxa8 Rxa8 20. Re1 Bf5 21. Qe2 Ra2 22. Qe3 Qa7 23. Nb3 Ra3 24. Qc3 Qa4 25. Re3 Bh3 26. f3 Rxb3 27. Qe1 Rxe3 0-1

LIICL 2005-06 Finals

Bd	#	PRA	Res	Res	#	LIRR
1	11	Tim Cranston	0	1	4	Mike Pappaceno
2	8	Jim Dwulit	1	0	15	Nick III Panico
3	26	Dennis Hom	1/2	1/2	14	Danny Panico
4	28	Tony Sommese	0	1	32	Frank Paciulli
			1 1/2	2 1/2		

Individual Swiss Results Round 4

Bd	#	White Player Name	Res	Res	#	Black Player Name
5	3	George Berg	1	0	10	Clayton Wilkie
6	27	Kolman Turiy	1	0	40	Darren Lustig
7	47	Ed Rusch	0	1	29	Rich Viale
8	12	Robert Rizzo	1	0	50	Adrian Celaru
9	6	Dave Leone	1	0	51	Twin Celaru
10	42	Nick Sr. Panico	1	0	52	John Shattuck
11	37	Frank Frohreich	1/2	1/2	7	Sal Celauro
12	34	Robert Standing	1	0	56	Justin Greenwald
13	35	Suresh Muttreja	1	0	64	Al Loshin
14	53	Mel Goldman	0	1	61	Ed Hartten
15	57	Mel Watnick	0	1	63	Walter Thomas

LIICL Quiz 2006

Starting with the Vol. XVI, No.6 edition of the League Leader, a new LIICL chess contest is being launched. It will consist in total of 12 chess related questions, one in each newsletter up until the LIICL Finals. The points will vary depending upon the level of difficulty. There will be prizes for the 5 contestants who compile the most total points. The prizes will be announced soon. Answers to each question can be submitted either via email to liicl@yahoo.com or in person to Bob Rizzo using one of the entry sheets provided during each round. Time is of the essence. To earn full points, your answer must be received no later than midnight of the following round of play. Due to the fact that the time between rounds is not always the same, this will mean that you will have more time to answer some questions than others. For each round that an answer is late, one point will be deducted from your score (assuming your answer is correct). Your answer must contain your name, the quiz problem number and your answer. If submitting by email, please put "LIICL Quiz 2006" in the title. All decisions of the judges are final. The final question appears below. Good Luck.

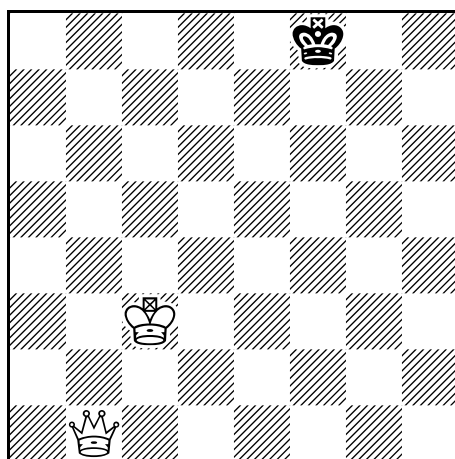
LIICL QUIZ 2006 Answer Form

LIICL Quiz 2006 Question #12:

In the position shown, the White King on c3 was crazy-glued to the board by your opponent when you went out for a cup of coffee. With you on the move as White, can you still win the game? If so what is the shortest number of moves to force mate?

Due Date: May 12, 2006

Total Value: 10 Points



Your Name: _____

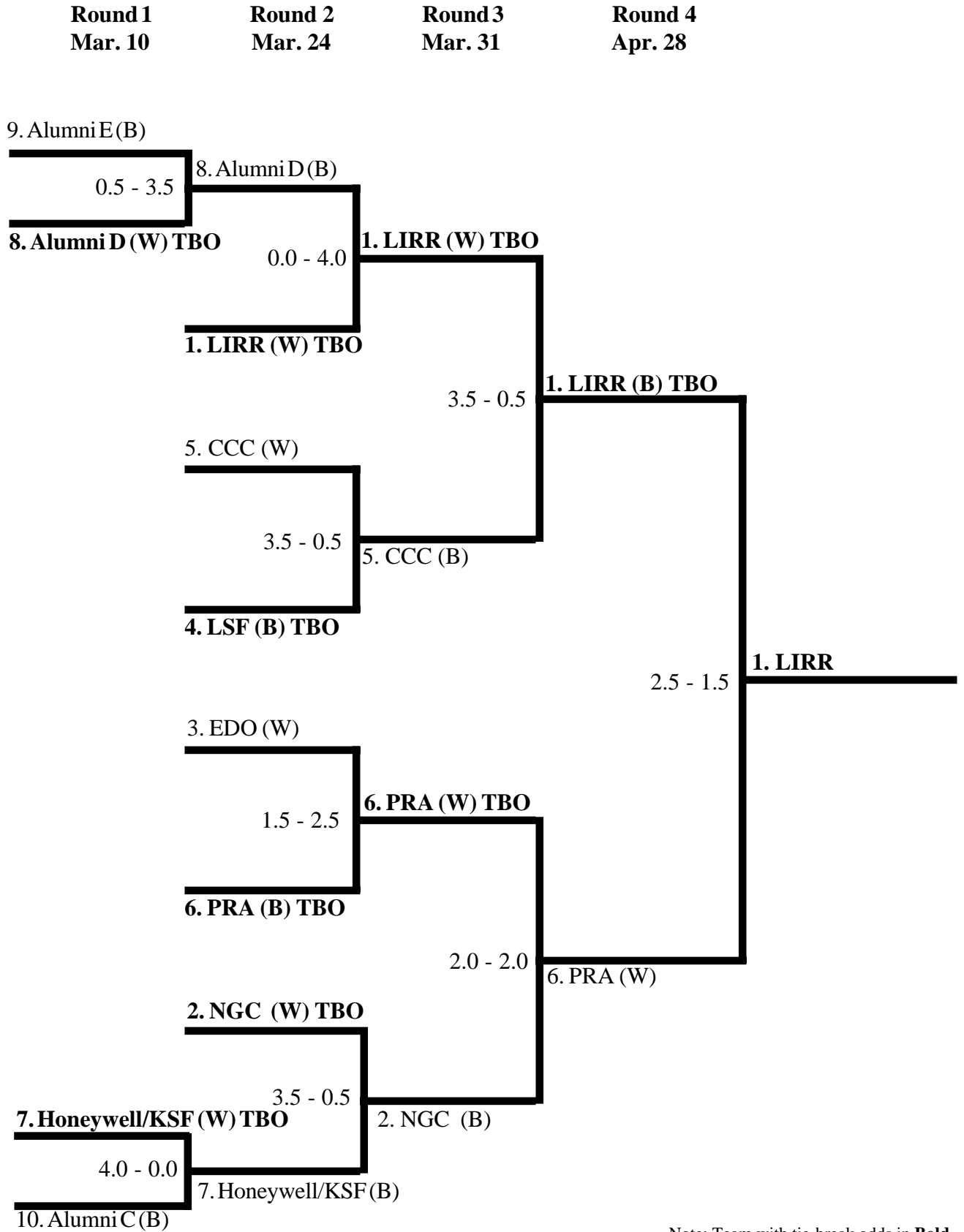
Your Answer: _____

(Please submit to Bob Rizzo or email to: liicl@yahoo.com)

Individual Swiss Standings

#	Name	Rtng	Rd 1	Rd 2	Rd 3	Rd 4	Tot	TB1	TB2	TB3
1	George Berg	2162	W55	W31	D21	W2	3.5	8.5	9.0	23.5
2	Clayton Wilkie	1978	W53	W24	W19	L1	3.0	9.0	9.0	22.5
3	Kolman Turiy	1849	W10	D52	D5	W29	3.0	9.0	7.5	24.5
4	Nick III Panico	2000	W27	W34	W30	L19	3.0	7.5	9.0	18.0
5	Steve Romero	1934	W56	W19	D3	H—	3.0	6.5	8.0	15.0
6	Mike Pappaceno	2111	H—	W54	D7	W21	3.0	6.5	6.5	16.5
7	Rich Viale	1843	H—	W51	D6	W20	3.0	6.5	6.5	15.5
8	Frank Paciulli	1844	H—	W59	H—	W11	3.0	4.0	6.0	11.0
9	Robert Rizzo	1951	D26	W35	L12	W57	2.5	8.0	6.0	20.0
10	Dave Leone	2012	L3	D28	W56	W60	2.5	8.0	4.5	19.0
11	Tony Sommesse	1805	W51	H—	W23	L8	2.5	6.5	7.0	15.5
12	Robert Wisbauer	1929	H—	D55	W9	H—	2.5	4.0	5.0	9.0
13	Danny Panico	1939	H—	H—	W53	D22	2.5	3.5	5.0	8.0
14	Nick Sr. Panico	1654	H—	H—	D32	W52	2.5	3.5	4.5	10.0
15	Willie Johnson	1941	H—	W20	H—	H—	2.5	2.0	5.0	6.0
16	Anna Zatonskih	2479	H—	H—	W28	H—	2.5	2.0	4.5	6.0
17	Jeremy Mandelkern	1930	H—	W57	H—	H—	2.5	1.5	5.0	4.0
18	Hugo Zunino	1202	H—	W62	H—	H—	2.5	0.5	5.0	1.0
19	Jim Dwulit	1935	W63	L5	L2	W4	2.0	10.0	5.0	28.5
20	Ed Rusch	1599	W58	L15	W24	L7	2.0	9.0	6.0	21.0
21	Tim Cranston	1969	H—	W25	D1	L6	2.0	8.5	5.5	21.5
22	Dennis Hom	1865	L25	W26	D33	D13	2.0	8.5	4.5	21.0
23	Matt Insogna	1600	W32	D33	L11	H—	2.0	6.5	5.5	17.0
24	Suresh Muttreja	1736	W64	L2	L20	W62	2.0	6.0	5.0	17.5
25	Len Chipkin	2073	W22	L21	D29	H—	2.0	6.0	5.0	16.5
26	Charles Spreckles	1585	D9	L22	W52	H—	2.0	6.0	4.0	16.0
27	Robert Standing	1751	L4	L30	W66	W63	2.0	6.0	3.0	16.5
28	Terry Lamb	1888	W62	D10	L16	H—	2.0	5.5	5.5	11.5
29	Darren Lustig	1671	H—	W66	D25	L3	2.0	5.0	5.5	13.0
30	Mike Dorsy	1842	H—	W27	L4	H—	2.0	5.0	4.5	12.0
31	Steve Solomon	1827	W61	L1	H—	H—	2.0	5.0	4.5	12.0
32	Robert Mastandrea	1378	L23	W65	D14	H—	2.0	5.0	4.0	12.0
33	Ken Marley	1799	H—	D23	D22	H—	2.0	4.0	4.0	10.5
34	Ed Ulfers	1700	X—	L4	H—	H—	2.0	3.0	3.5	9.0
35	Tom Ogen	1648	W66	L9	H—	H—	2.0	2.5	4.5	6.0
36	Julian Hodos	1914	D54	H—	H—	H—	2.0	1.5	3.5	3.5
37	James Critelli	2165	H—	H—	H—	H—	2.0	0.0	3.0	0.0
38	Andy Hellenschmidt	1988	H—	H—	H—	H—	2.0	0.0	3.0	0.0
39	Keith Rodriguez	1922	H—	H—	H—	H—	2.0	0.0	3.0	0.0
40	Charlie Bonfante	1902	H—	H—	H—	H—	2.0	0.0	3.0	0.0
41	Robert Guevara	1897	H—	H—	H—	H—	2.0	0.0	3.0	0.0
42	Kevin Mahoney	1881	H—	H—	H—	H—	2.0	0.0	3.0	0.0
43	Jim Kolczynski	1722	H—	H—	H—	H—	2.0	0.0	3.0	0.0
44	Danny Wu	1664	H—	H—	H—	H—	2.0	0.0	3.0	0.0
45	Rich Cecchini	1612	H—	H—	H—	H—	2.0	0.0	3.0	0.0
46	Paul Proffman	1482	H—	H—	H—	H—	2.0	0.0	3.0	0.0
47	J Caracciolo	1420	H—	H—	H—	H—	2.0	0.0	3.0	0.0
48	Pete Schilling	1403	H—	H—	H—	H—	2.0	0.0	3.0	0.0
49	George Egert	1398	H—	H—	H—	H—	2.0	0.0	3.0	0.0
50	Tony Cretaro	1142	H—	H—	H—	H—	2.0	0.0	3.0	0.0
51	Sal Celauro	2008	L11	L7	W58	D54	1.5	8.5	2.5	20.5
52	John Shattuck	1556	W65	D3	L26	L14	1.5	8.0	5.5	18.0
53	Paul Montenero	1714	L2	W63	L13	H—	1.5	6.5	3.0	17.0
54	Frank Frohreich	1717	D36	L6	H—	D51	1.5	6.5	3.0	14.5
55	George Alikakos	1871	L1	D12	H—	H—	1.5	6.0	2.0	15.0
56	Ed Hartten	1379	L5	H—	L10	W64	1.5	6.0	2.0	14.5
57	Adrian Celaru	1574	H—	L17	W64	L9	1.5	5.5	3.5	14.0
58	Walter Thomas	1372	L20	D64	L51	W66	1.5	4.0	2.5	10.0
59	William DePrisco	1589	H—	L8	H—	H—	1.5	3.0	2.0	7.0
60	Twin Celaru	1574	H—	U—	B—	L10	1.5	2.5	2.5	4.5
61	John Kingsley	1621	L31	H—	H—	H—	1.5	2.0	1.5	5.5
62	Al Loshin	1307	L28	L18	B—	L24	1.0	6.5	1.0	17.5
63	Justin Greenwald	1447	L19	L53	W65	L27	1.0	6.0	2.0	12.0
64	Mel Goldman	1510	L24	D58	L57	L56	0.5	6.5	1.5	14.0
65	Carrie Goldstein	1468	L52	L32	L63	H—	0.5	4.5	0.0	12.0
66	Mel Watnick	1421	L35	L29	L27	L58	0.0	7.5	0.0	17.0

2005-2006 LIICL Playoff Brackets



Note: Team with tie-break odds in **Bold**