



The League Leader

The Official Newsletter of the Long Island Industrial Chess League

Volume XVII, Number 07

www.liicl.com

January 5, 2007

New Rule Takes Effect

Caller Offers Live Post Mortem

In December on Icelandic TV a chess match was staged between Bragi Thorfinsson and Arnar Gunnarson. The show was sponsored by Ríkisútvarpið RUV, the Icelandic National Broadcasting Service, an independent public service broadcaster. The following game was played.

White: Thorfinsson, Bragi

Black: Gunnarson, Arnar

Iceland TV

Date: 09.12.2006

[C50]

1.e4e52.Nf3Nc63.Bc4d64.d3Be65.Bxe6fxe6
6.c3Qd77.0-0Nf68.b4a69.a4Be710.Na30-
011.Nc4b512.axb5axb513.Na5d514.Bg5Bd6
15.Re1h616.Bh4Nxa517.bxa5b418.Qb3Qb5
19.Bxf6gxf620.c4dxc421.dxc4Qc622.Nh4
Kh723.c5Be724.Qxb4Bxc525.Qb3Bd4
26.Rac1Qd727.Qa3Qd628.Qf3Rxa529.Qh5
Rg830.Qf7+Rg731.Qxf6Ra232.Rf1Re2
33.Qf3Rd234.Qf6Re235.h3Rxe436.Rc6Qxc6
37.Nf5

(continued on page 5)

Topalov On Top

Veselin Topalov may have lost the FIDE chess title but he still retains the number one world ranking – barely. The top ten players by rating are shown in the table. Topalov clings to a 4-point lead over Anand and in third only 17 points back is World Champion Vladimir Kramnik. The top 10 players are separated by only 50 rating points. Of course the list is missing the now retired Gary Kasparov who might still be leading if he were playing. Fritz 10 might even be included if that were allowed!

Jan 2007 FIDE Top 10

1	Topalov, Veselin	2783
2	Anand, Viswanathan	2779
3	Kramnik, Vladimir	2766
4	Mamedyarov, Shakhriyar	2754
5	Ivanchuk, Vassily	2750
6	Leko, Peter	2749
7	Aronian, Levon	2744
8	Morozevich, Alexander	2741
9	Adams, Michael	2735
10	Gelfand, Boris	2733

New USCF Rule - 15a

You may not know what a MonRoi device is but it has affected the way you will play chess in the future. A change in the rules of chess will take effect on January 1, 2007. The MonRoi (French for “My King”) is a handheld device with the chessboard and pieces graphically displaced. You can move the pieces on the display board which records a legal score sheet of your game. It is standard in many high profile tournaments. Traditionally there are players who write down their moves before moving the pieces. With the MonRoi, this would allow you to see the new position prior to moving on the board. Thus the reason for the rule change: to eliminate this advantage. You must make your move on the board before recording the move.

The USCF has chosen to make the rule universal even if you are using a traditional score sheet. This draconian measure differs from FIDE rules which allow recording of moves first if using a score sheet. The LIICL rules state that we follow USCF rules unless otherwise so stated in the by-laws. So the LIICL will not allow recording prior to moving. The suggested penalty for the first offense is 10 minutes off the offender’s clock

In This Issue

Caller Offers Live post Mortem	1
Topalov On Top	1
New USCF Rule - 15a	1
2006-07 LIICL Team Standings	1
LIICL Individual Class Standings	2
LIICL Directory	3
LIICL Mid-Season Ratings	4
LIICL Tie-Breaks	5
Team Results Round 6	5
Individual Results Round 6	5
LIICL 2006-2007 Schedule, Rev. D	6

2006-2007 LIICL Regular Season Team Standings

Team	Team Rating	LIICL PPR	TB's PR	Games				Match				
				W	L	D	Pts	W	L	D	Pts	F
NGC	1977	17.6	5.70	16	2	2	17.0	5	0	0	5.0	0
LSF	1874	16.8	4.90	15	3	2	16.0	4	0	1	4.5	0
PRA	1976	14.0	4.75	11	6	3	12.5	3	2	0	3.0	0
CCC	1829	13.2	4.15	10	7	3	11.5	2	1	2	3.0	0
EDO	1869	11.0	6.40	8	9	3	9.5	1	2	2	2.0	3
Alumni D	1702	10.7	3.96	8	12	4	10.0	2	4	0	2.0	0
Honeywell/KS	1703	9.6	2.70	7	11	2	8.0	1	3	1	1.5	4
Alumni E	1570	8.8	1.30	6	12	2	7.0	2	3	0	2.0	4
Alumni C	1464	4.4	0.15	0	19	1	0.5	0	5	0	0.0	0

Individual Class Standings After Round 6

Rating	Name	Team	PPR	G	W	L	D	Bye
Class A								
1978	Rizzo, Robert	NGC	5.00	5	5	0	0	1
2004	Leone, Dave	LSF	4.20	5	3	0	2	1
1920	Bonfante, Charles	LSF	4.20	5	4	1	0	1
2172	Berg, George	NGC	3.80	5	3	1	1	1
1982	Wilkie, Clayton	NGC	3.80	5	3	1	1	1
1967	Romero, Steve	EDO	3.80	5	2	0	3	1
1953	Dwulit, James	PRA	3.80	4	3	0	1	1
2102 /6	Pour, Darius	ALD	3.67	5	4	1	0	0
2100	Pappaceno, Mike	PRA	3.40	5	2	1	2	1
2089	Chipkin, Len	EDO	3.40	4	3	1	0	1
1984	Panico, Nick III	PRA	2.60	3	2	1	0	1
1938	Wisbauer, Robert	PRA	1.80	1	1	0	0	1
1892	Hodos, Julian	ALE	1.80	3	1	2	0	1
Class B								
1901	Celauro Sal	LSF	4.20	5	4	1	0	1
1854	Viale, Richard	CCC	3.40	5	3	2	0	1
1833	Marley, Ken T	NGC	3.40	3	3	0	0	1
1723	Standing, Robert	LSF	3.40	3	3	0	0	1
1855 /13	Dorsky Michael	CCC	3.00	4	2	1	1	1
1745	Frohreich, Frank	ALD	3.00	6	1	1	4	0
1854	Alikakos, George	EDO	2.60	5	2	3	0	1
1822	Sommese, Anthon	PRA	2.60	3	2	1	0	1
1727	Muttreja, Suresh	HON	2.60	5	2	3	0	1
1693	Montenero, Paul J	CCC	2.60	3	2	1	0	1
1830	Hom, Dennis	PRA	1.80	4	1	3	0	1
1809	Solomon, Steve	HON	1.40	2	0	1	1	1
1883	Lamb, Terry	CCC	1.00	1	0	1	0	1
1846 /8	Lustig, Darren	IND	1.00	0	0	0	0	0
Class C								
1630	Insogna, Matt	HON	3.40	4	3	1	0	1
1649	Ogen, Tom	HON	3.00	5	2	2	1	1
1671	Wu, Danny	NGC	2.60	2	2	0	0	1
1528	Shattuck, John	ALD	2.33	5	2	3	0	0
1591	Celaru, Adrian	ALE	2.20	4	1	2	1	1
1593	Spreckles, Charle	EDO	1.80	3	1	2	0	1
1596	Rusch, Ed	ALD	1.67	5	1	4	0	0
1664 USCF	Kubelle, Matt	IND	1.00	0	0	0	0	0
1626 USCF	Soto, Jorge	IND	1.00	0	0	0	0	0
1623	Kingsley, John	ALC	1.00	3	0	3	0	1
1554 /7	DePrisco, William	ALD	1.00	1	0	1	0	0
Class D								
1489	Proffman, Paul	CCC	3.40	4	2	0	2	1
1683 /5	Schilling, Pete	ALE	2.60	4	2	2	0	1
1408	Thomas, Walter	ALE	2.60	4	2	2	0	1
1456	Greenwald, Justin	LSF	1.80	2	1	1	0	1
1140	Cretaro, Tony	CCC	1.80	3	1	2	0	1
1435	Goldman, Mel	ALC	1.40	5	0	4	1	1
1426	Warnock, Andy	CCC	1.40	1	0	0	1	1
UNR /1	Kelly, Dave	IND	1.00	0	0	0	0	0
1371	Hartten, Ed	ALD	1.00	2	0	2	0	0
1404	Goldstein, Carrie	IND	1.00	0	0	0	0	0
1400 EST	Roman, C	ALC	1.00	1	0	1	0	1
1412	Mastandrea, Robe	ALC	1.00	4	0	4	0	1
1383	Watnick, Mel	ALC	1.00	4	0	4	0	1
1289	Loshin, Al	ALC	1.00	3	0	3	0	1

The League Leader

www.liicl.com

Editor-in-Chief
Robert Rizzo

Copy Editor
Clayton Wilkie

Photography
Kathy Dwulit
Tony Cretaro

Board of Directors

President
Steve Romero

Treasurer
Paul Montenero

Rules Director
Mike Pappaceno

Executive Board

Honeywell/KSF
Tom Ogen

EDO
George Alikakos

Alumni C
John Kinglsey

Clear-Cut Computing
Paul Montenero

Alumni D
Ed Rusch

Life Service Foundation
Robert Standing

Northrop Grumman
George Berg

Alumni E
Adrian Celaru

Photon Research Assoc.
Jim Dwulit

The League Leader, © 2007, Long Island Industrial Chess League, is published approximately biweekly during the Long Island Industrial Chess season from October to May each year. The Long Island Industrial Chess League is a non-profit organization founded for the purpose of promoting goodwill and friendship through the game of chess and to conduct tournaments, matches and other forms of chess competition. Neither the LIICL nor its members assume any responsibility for the accuracy of the information contained herein. No reproduction in part nor in full may be made without the expressed written consent of the Board of Directors of the Long Island Industrial Chess League. Requests and inquiries may be made in writing to:

Board of Directors
LIICL
102 Rosebud Ave.
Merrick, NY 11566

LIICL Directory

September 14, 2006

<u>Name</u>	<u>Function</u>	<u>Telephone</u>	<u>E-mail</u>
Alikakos, George	EDO, Captain	718-836-1250 (H) 631-630-5343 (W)	george.alikakos@DP.ail.com
Berg, George	Northrop Grumman, Captain	516-346-9111 (W) 516-938-5370 (H)	george.berg@ngc.com
Celaru, Adrian	Alumni E, Captain		acelaru@veeco.com
Dwulit, Jim	Photon Research Assocs., Captain	631-467-7565 (H) 631-331-6482 (W)	dwulit@photon.com
Kingsley, John	Alumni C, Captain	631-591-2661 (H)	JKingsley@msn.com
Montenero, Paul	Clear-Cut Computing, Captain Treasurer, LIICL	516-845-4081 (W)	clearcut@mindspring.com
Ogen, Thomas	Honeywell/KSF, Captain	718-446-5443 (H) 516-921-6704 x2880 (W)	Tom_Ogen@ademco.com
Pappaceno, Mike	Rules Director, LIICL		MPappaceno@aol.com
Rizzo, Robert	Editor, League Leader	516-575-2306 (W) 516-378-1342 (H)	robert.rizzo@ngc.com rrizknight@juno.com
Romero, Steve	President, LIICL	(631) 421-1468 (H) (631) 897-4161 (C)	
Rusch, Ed	Alumni D, Captain	516-735-0417 (H)	
Standing, Robert	LSF, Captain	631-271-6120 (H) 631-697-9846 (C)	
Huntington Library	Playing Site	631-427-5165	
LIICL	Board of Directors		www.liicl.com

LIICL 2006-07 Mid-Season Ratings

byName			byTeam		
Rating	Name	Team	Rating	Name	Team
1854	Alikakos, George	EDO	1623	Kingsley, John	ALC
2172	Berg, George	NGC	1435	Goldman, Mel	ALC
1920	Bonfante, Charles	LSF	1412	Mastandrea, Robert	ALC
1591	Celaru, Adrian	ALE	1400	EST Roman, C	ALC
1901	Celauro Sal	LSF	1383	Watnick, Mel	ALC
2089	Chipkin, Len	EDO	1289	Loshin, Al	ALC
1140	Cretaro, Tony	CCC	2102	/6 Pour, Darius	ALD
1554	/7 DePrisco, William	ALD	1745	Frohreich, Frank	ALD
1855	/13 Dorsky Michael	CCC	1596	Rusch, Ed	ALD
1953	Dwulit, James	PRA	1554	/7 DePrisco, William	ALD
1745	Frohreich, Frank	ALD	1528	Shattuck, John	ALD
1435	Goldman, Mel	ALC	1371	Hartten, Ed	ALD
1404	Goldstein, Carrie	IND	1892	Hodos, Julian	ALE
1456	Greenwald, Justin	LSF	1683	/5 Schilling, Pete	ALE
1371	Hartten, Ed	ALD	1591	Celaru, Adrian	ALE
1892	Hodos, Julian	ALE	1408	Thomas, Walter	ALE
1830	Hom, Dennis	PRA	1883	Lamb, Terry	CCC
1630	Insogna, Matt	HON	1855	/13 Dorsky Michael	CCC
UNR	/1 Kelly, Dave	IND	1854	Viale, Richard	CCC
1623	Kingsley, John	ALC	1693	Montenero, Paul J	CCC
1664	USCF Kubelle, Matt	IND	1489	Proffman, Paul	CCC
1883	Lamb, Terry	CCC	1426	Warnock, Andy	CCC
2004	Leone, Dave	LSF	1140	Cretaro, Tony	CCC
1289	Loshin, Al	ALC	2089	Chipkin, Len	EDO
1846	/8 Lustig, Darren	IND	1967	Romero, Steve	EDO
1833	Marley, Ken T	NGC	1854	Alikakos, George	EDO
1412	Mastandrea, Robert	ALC	1593	Spreckles, Charles	EDO
1693	Montenero, Paul J	CCC	1809	Solomon, Steve	HON
1727	Muttreja, Suresh	HON	1727	Muttreja, Suresh	HON
1649	Ogen, Tom	HON	1649	Ogen, Tom	HON
1984	Panico, Nick III	PRA	1630	Insogna, Matt	HON
2100	Pappaceno, Mike	PRA	1846	/8 Lustig, Darren	IND
2102	/6 Pour, Darius	ALD	1664	USCF Kubelle, Matt	IND
1489	Proffman, Paul	CCC	1626	USCF Soto, Jorge	IND
1978	Rizzo, Robert	NGC	1404	Goldstein, Carrie	IND
1400	EST Roman, C	ALC	UNR	/1 Kelly, Dave	IND
1967	Romero, Steve	EDO	2004	Leone, Dave	LSF
1596	Rusch, Ed	ALD	1920	Bonfante, Charles	LSF
1683	/5 Schilling, Pete	ALE	1901	Celauro Sal	LSF
1528	Shattuck, John	ALD	1723	Standing, Robert	LSF
1809	Solomon, Steve	HON	1456	Greenwald, Justin	LSF
1822	Sommese, Anthony	PRA	2172	Berg, George	NGC
1626	USCF Soto, Jorge	IND	1982	Wilkie, Clayton	NGC
1593	Spreckles, Charles	EDO	1978	Rizzo, Robert	NGC
1723	Standing, Robert	LSF	1833	Marley, Ken T	NGC
1408	Thomas, Walter	ALE	1671	Wu, Danny	NGC
1854	Viale, Richard	CCC	2100	Pappaceno, Mike	PRA
1426	Warnock, Andy	CCC	1984	Panico, Nick III	PRA
1383	Watnick, Mel	ALC	1953	Dwulit, James	PRA
1982	Wilkie, Clayton	NGC	1938	Wisbauer, Robert	PRA
1938	Wisbauer, Robert	PRA	1830	Hom, Dennis	PRA
1671	Wu, Danny	NGC	1822	Sommese, Anthony	PRA

LIICL Team Tie-Breaks

Through Rnd. **6.0**

<u>Team</u>	<u>TBs</u>	<u>Game</u>	<u>ALE</u>	<u>ALD</u>	<u>EDO</u>	<u>ALC</u>	<u>HON</u>	<u>PRA</u>	<u>LSF</u>	<u>NGC</u>	<u>CCC</u>
		<u>Pts</u>	2.0	2.0	2.0	0.0	1.5	3.0	4.5	5.0	3.0
ALE	6.50	7.0		2.5	0.0	4.0	0.0	0.0	0.0	0.0	0.5
ALD	23.75	10.0	5.5		1.5	0.0	0.0	0.0	0.5	0.0	2.5
EDO	32.00	9.5	0.0	2.5		0.0	0.0	1.5	2.0	1.5	2.0
ALC	0.75	0.5	0.0	0.0	0.0		0.5	0.0	0.0	0.0	0.0
HON	13.50	8.0	0.0	0.0	0.0	3.5		1.0	0.0	0.0	3.5
PRA	23.75	12.5	0.0	0.0	2.5	4.0	3.0		1.5	1.5	0.0
LSF	24.50	16.0	0.0	3.5	2.0	4.0	4.0	2.5		0.0	0.0
NGC	28.50	17.0	4.0	4.0	2.5	4.0	0.0	2.5	0.0		0.0
CCC	20.75	11.5	3.5	1.5	2.0	0.0	4.5	0.0	0.0	0.0	

Team Results - Round 6

01-Dec-2006

<p>LSF</p> <p>-----</p> <p>Leone D 1.0 0.0</p> <p>Bonfante C 0.0 1.0</p> <p>Celauro S 0.0 1.0</p> <p>Standing R 1.0 0.0</p> <p> 2.0 2.0</p> <p>CCC</p> <p>-----</p> <p>Viale R 1.0 0.0</p> <p>Montenero P 1.0 0.0</p> <p>Proffman P 1.0 0.0</p> <p>Warnock A 0.5 0.5</p> <p> 3.5 0.5</p>	<p>EDO</p> <p>-----</p> <p>Forfeit</p> <p>Romero S</p> <p>Alikakos G</p> <p>Forfeit</p> <p>Alumni E</p> <p>-----</p> <p>Forfeit</p> <p>Forfeit</p> <p>Forfeit</p> <p>Thomas W</p>	<p>PRA</p> <p>-----</p> <p>Pappaceno M 1.0 0.0</p> <p>Panico N III 1.0 0.0</p> <p>Wisbauer R 1.0 0.0</p> <p>Dwulit J 1.0 0.0</p> <p> 4.0 0.0</p> <p>NGC</p> <p>-----</p> <p>Berg G 1.0 0.0</p> <p>Wilkie C 1.0 0.0</p> <p>Rizzo R 1.0 0.0</p> <p>Marley K 1.0 0.0</p> <p> 4.0 0.0</p>	<p>Alumni C</p> <p>-----</p> <p>Goldman M</p> <p>Mastandrea R</p> <p>Watnick M</p> <p>Loshin A</p> <p>Alumni D</p> <p>-----</p> <p>Pour D</p> <p>Frohreich F</p> <p>Rusch E</p> <p>Shattuck J</p>
---	---	---	---

Individual Results - Round 6

01-Dec-2006

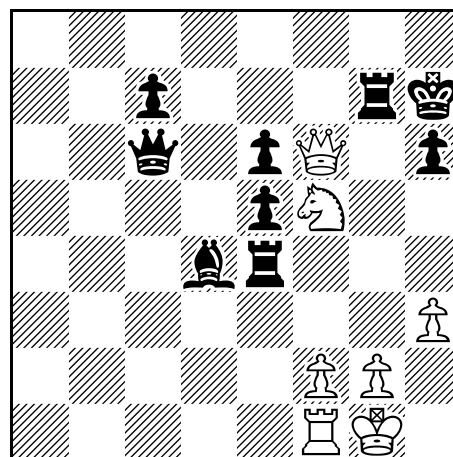
White		Black
-----		-----
Kingsley J	1.0 0.0	Hartten E

Caller Offers Live Post Mortem

(continued from page 1)

(see Diagram) Kg838.Qxg7# 1-0.

After the game moderator GM Helgi Olafsson received a phone call. The caller claimed that Black could have won the game with the following combination: 37...Rxg2+! 38.Kh1 38.Rh4!! 39.Qf7+ Rg7 40.f3 Rxh3 mate. It seems that the caller has not lost any of his tactical acumen. His name – Robert James Fischer!



2006-2007 LIICL Regular Season Schedule, Rev. D November 7, 2006

Starting time for the regular season is 6:50 PM. Time control is game/85+5 or game/90.

Round	1	2	3	4	5	6	7	8	9	10	11	12
Date	15-Sep	29-Sep	13-Oct	27-Oct	10-Nov	01-Dec	05-Jan	19-Jan	02-Feb	09-Feb	23-Feb	09-Mar
Location	LIB	LIB	LIB	LIB	LIB	LIB	LIB	LIB	LIB	LIB	LIB	LIB
1AluE	8 W	2 W	4 B	BYE	2 B D	9 B	3 B	5 W C	BYE	7 B D	6 W S	4 W
2AluD	7 W C	1 B	3 W	9 W S	1 W	8 B	BYE	4 B D	5 B D	6 B	5 W	BYE
3EDO	6 W	9 B D	2 B S	8 W	BYE	7 B	1 W C	BYE	8 B	5 B	4 W	7 W D
4AluC	5 W	8 B S	1 W	7 W	BYE	6 B C	9 W D	2 W S	9 B	BYE	3 B	1 B
5Hon/KSF	4 B S	7 B C	9 B	6 W	9 W	BYE	8 W	1 B	2 W S	3 W	2 B D	BYE
6PRA	3 B	BYE	8 B	5 B C	7 B C	4 W D	BYE	9 W	7 W S	2 W	1 B	8 W
7LSF	2 B	5 W	BYE	4 B D	6 W S	3 W	BYE	8 W	6 B	1 W	9 B C	3 B S
8NGC	1 B D	4 W	6 W C	3 B	BYE	2 W	5 B	7 B	3 W	9 W S	BYE	6 B C
9CCC	BYE	3 W	5 W D	2 B	5 B	1 W S	4 B	6 B	4 W C	8 B C	7 W	BYE
Playoffs:	Round 1: 23-Mar LIB		Quarters: 13-Apr LIB		Semis: 20-Apr LIB		Finals: 20-Apr LIB		Individual Final: 04-May LIB			
Events:	All-Star Match: TBD TBD			Charity Blitz: TBD TBD		GM Simul: TBD TBD		Awards Evening: 01-Jun LIB				
Key:	D = Director S = Secondary Director C = Coffee Duty				CCH= The Congregational Church of Huntington LIB= Huntington Library ENL= East Northport Library				W= White on Board 1 B= Black on Board 1 TBD= To Be Determined			